

Roadway Plan & Profile Drawings

Appendix B

File: I:\labdata\10145.00 Lois Drive And W 32nd Ave Pathway\00 CADD 2019\01 Working Set\01 Civil\10145.00 Legend & Abbreviations.dwg

PLAN LEGEND

PROPERTY		
EXISTING	PROPOSED	
---	---	CENTERLINE
---	---	EASEMENT LINE
---	---	PROPERTY LINE
---	---	ROW LINE
---	---	SECTION LINE
---	---	TEMPORARY CONSTRUCTION EASEMENT/PERMIT
UTILITY		
EXISTING	PROPOSED	
----	----	ABANDONED UTILITY
C	C	CABLE TV LINE (UNDERGROUND)
OC	OC	CABLE TV LINE (OVERHEAD)
DU.C	DU.C	CABLE TV PEDESTAL
[Symbol]	[Symbol]	CONTROLLER OR ATR CABINET
[Symbol]	[Symbol]	CULVERT
[Symbol]	[Symbol]	DRY WELL
E	E	ELECTRIC LINE (UNDERGROUND)
OE	OE	ELECTRIC LINE (OVERHEAD)
OEC	OEC	ELECTRIC & CABLE TV LINE (OVERHEAD)
[Symbol]	[Symbol]	ELECTRIC & TELEPHONE LINE (OVERHEAD)
[Symbol]	[Symbol]	ELECTRIC JB TYPE IA
[Symbol]	[Symbol]	ELECTRIC JB TYPE II
[Symbol]	[Symbol]	ELECTRIC JB TYPE III
[Symbol]	[Symbol]	ELECTRIC LOAD CENTER
[Symbol]	[Symbol]	ELECTRIC MANHOLE/JB
O-OEM	O-OEM	ELECTRIC METER
DU.E	DU.E	ELECTRIC PEDESTAL UNDERGROUND
[Symbol]	[Symbol]	ELECTRIC SIGN
[Symbol]	[Symbol]	ELECTRIC SWITCH CABINET
[Symbol]	[Symbol]	ELECTRIC TRANSFORMER
[Symbol]	[Symbol]	ELECTRIC VAULT
FO	FO	FIBER OPTIC LINE (UNDERGROUND)
[Symbol]	[Symbol]	FIBER OPTIC VAULT
FD	FD	FLOOR DRAIN
FS	FS	FOOTING DRAIN SERVICE LINE
FS	FS	FOOTING DRAIN SERVICE CONNECTION
G	G	GAS LINE
G.M.	G.M.	GAS METER
[Symbol]	[Symbol]	GAS VALVE
[Symbol]	[Symbol]	GUY POLE
[Symbol]	[Symbol]	GUY ANCHOR
[Symbol]	[Symbol]	JOINT USE ELECTRIC & TELEPHONE POLE
L	L	LIGHTING LINE
[Symbol]	[Symbol]	LUMINAIRE
[Symbol]	[Symbol]	LUMINAIRE (PEDESTRIAN)
S	S	SANITARY SEWER LINE
[Symbol]	[Symbol]	SANITARY SEWER MANHOLE
[Symbol]	[Symbol]	SANITARY SEWER SERVICE CONNECTION
[Symbol]	[Symbol]	SANITARY SEWER CLEANOUT
SD	SD	STORM DRAIN LINE
SB	SB	SUBDRAIN LINE
[Symbol]	[Symbol]	STORM DRAIN CATCH BASIN
[Symbol]	[Symbol]	STORM DRAIN CATCH BASIN MANHOLE OR MH
[Symbol]	[Symbol]	STORM DRAIN MANHOLE
[Symbol]	[Symbol]	STUBOUT CAPPED OR PLUGGED END
OHT/C	OHT/C	TELEPHONE & CABLE TV LINE (OVERHEAD)
OT	OT	TELEPHONE LINE (OVERHEAD)

UTILITY		
EXISTING	PROPOSED	
[Symbol]	[Symbol]	TELEPHONE LINE (UNDERGROUND)
[Symbol]	[Symbol]	TELEPHONE MANHOLE
[Symbol]	[Symbol]	TELEPHONE PEDESTAL
[Symbol]	[Symbol]	TRAFFIC DETECTOR LOOPS
[Symbol]	[Symbol]	TRAFFIC LINE (UNDERGROUND)
[Symbol]	[Symbol]	TRAFFIC SIGNAL POLE
[Symbol]	[Symbol]	TRAFFIC SIGNAL POLE/LUMINAIRE
[Symbol]	[Symbol]	UTILITY POLE
[Symbol]	[Symbol]	WATER LINE
[Symbol]	[Symbol]	WATER FIRE HYDRANT
[Symbol]	[Symbol]	WATER KEY BOX
[Symbol]	[Symbol]	WATER MANHOLE
[Symbol]	[Symbol]	WATER VALVE
[Symbol]	[Symbol]	WATER WELL
ROADWAY		
EXISTING	PROPOSED	
---	---	APPROX SLOPE LIMITS (CUT)
---	---	APPROX SLOPE LIMITS (FILL)
---	---	CURB & GUTTER
---	---	EDGE OF PAVEMENT
---	---	EDGE OF SIDEWALK/CONCRETE
---	---	GUARDRAIL, BARRIER RAIL
---	---	INTERLOCKING CONCRETE PAVERS
---	---	RETAINING WALL (TYPE VARIES)
---	---	STREET SIGN
---	---	UNPAVED (GRAVEL) EDGE OF ROAD/DWY
MISCELLANEOUS		
EXISTING	PROPOSED	
[Symbol]	[Symbol]	BLUFF AREA/ EARTHWORK SLOPE
[Symbol]	[Symbol]	BOULDER
[Symbol]	[Symbol]	DECK
[Symbol]	[Symbol]	DRAINAGE ARROW (DIRECTION OF FLOW)
[Symbol]	[Symbol]	DRAINAGE SWALE
[Symbol]	[Symbol]	FENCE (TYPE VARIES)
[Symbol]	[Symbol]	FENCE (DECORATIVE)
[Symbol]	[Symbol]	HOUSE OR STRUCTURE
[Symbol]	[Symbol]	LANDSCAPING ROCK
[Symbol]	[Symbol]	MAILBOX (INDIVIDUAL)
[Symbol]	[Symbol]	MAILBOX (CLUSTER)
[Symbol]	[Symbol]	NEWS BOX
[Symbol]	[Symbol]	PARKING METER
[Symbol]	[Symbol]	PARCEL NUMBERS
[Symbol]	[Symbol]	RIPRAP (CLASS I)
[Symbol]	[Symbol]	STREAM SUBSTRATE
[Symbol]	[Symbol]	STREAM/EDGE OF WATERWAY
[Symbol]	[Symbol]	TREE/SHRUB (CONIFEROUS)
[Symbol]	[Symbol]	TREE/SHRUB (DECIDUOUS)
[Symbol]	[Symbol]	TEST BORING OR TEST HOLE
[Symbol]	[Symbol]	VEGETATION & BRUSH

PROFILE LEGEND

SYMBOL		
EXISTING	PROPOSED	
---	---	APPROXIMATE EXCAVATION LIMITS
---	---	EXISTING GROUND OVER PIPE
---	0.00%	GRADE AT CENTER LINE
---	---	GRADE AT LEFT ROW
---	---	GRADE AT RIGHT ROW
[Symbol]	[Symbol]	PIPE (PROFILE)
[Symbol]	[Symbol]	PIPE (SECTION)
[Symbol]	[Symbol]	STORM DRAIN CATCH BASIN/OGS
[Symbol]	[Symbol]	STORM DRAIN/SANITARY SEWER MANHOLE & PIPE
[Symbol]	[Symbol]	UTILITY CROSSING
[Symbol]	[Symbol]	UTILITY CROSSING (WATER/SEWER/STORM DRAIN)
[Symbol]	[Symbol]	UTILITY CROSSING (CABLE)
[Symbol]	[Symbol]	UTILITY CROSSING (ELECTRIC)
[Symbol]	[Symbol]	UTILITY CROSSING (FIBER OPTIC)
[Symbol]	[Symbol]	UTILITY CROSSING (GAS)
[Symbol]	[Symbol]	UTILITY CROSSING (TELEPHONE)
[Symbol]	[Symbol]	INSULATION
[Symbol]	[Symbol]	RIPRAP (CLASS I)
[Symbol]	[Symbol]	STREAM SUBSTRATE

COMMON ABBREVIATIONS

ABBR.	DESCRIPTION	ABBR.	DESCRIPTION
AC	ASPHALT CONCRETE	OC	ON CENTER
AC	ASBESTOS CONCRETE	OCEW	ON CENTER EACH WAY
APPROX/ APPX	APPROXIMATE	OD	OUTSIDE DIAMETER
BM	BENCH MARK	OGS	OIL AND GRIT SEPARATOR
BOP	BEGINNING OF PROJECT	OH	OVERHEAD
C&G	CURB AND GUTTER	PC	POINT OF CURVATURE
CB	CATCH BASIN	PCC	PORTLAND CONCRETE CEMENT/ POINT OF CONTINUOUS CURVATURE
CBMH	CATCH BASIN MANHOLE	PI	POINT OF INTERSECTION
CI	CAST IRON	PL, P/L	PROPERTY LINE
C/L, CL	CENTERLINE	PCMP	PRECOATED CORRUGATED METAL PIPE
CMP	CORRUGATED METAL PIPE	POPEP	PERFORATED CORRUGATED POLYETHYLENE PIPE
CO	CLEANOUT	PSL	POSTED SPEED LIMIT
CONST	CONSTRUCTION	PT	POINT OF TANGENCY
CPEP	CORRUGATED POLYETHYLENE PIPE	PUE	PUBLIC USE EASEMENT
CY	CUBIC YARD	PVC	POINT OF VERTICAL CURVATURE
DIA	DIAMETER	PVC	POLYVINYL CHLORIDE
DI	DUCTILE IRON	PVI	POINT OF VERTICAL INTERSECTION
DW	DETECTABLE WARNING	PVT	POINT OF VERTICAL TANGENT
DWY	DRIVEWAY	REINF	REINFORCEMENT
E	EAST	ROW, R/W	RIGHT OF WAY
ELEC	ELECTRIC / ELECTRICAL	RT, R	RIGHT
ELEV, EL	ELEVATION	S	SOUTH
EOP	END OF PROJECT / EDGE OF PAVEMENT	S/W	SIDEWALK
F&I	FURNISH AND INSTALL	SS	STAINLESS STEEL
FG	FINISHED GRADE	SEC COR	SECTION CORNER
GA	GAUGE	SF	SQUARE FOOT
GALV	GALVANIZED	SI	STREET INTERSECTION
GB	GRADE BREAK	ST	STREET
JB	JUNCTION BOX	STA	STATION / STATIONING
LC	LOAD CENTER	STD	STANDARD
IAW	IN ACCORDANCE WITH	STRUCT	STRUCTURE
ID	INSIDE DIAMETER	TBC	TOP BACK OF CURB
IE	INVERT ELEVATION	TBM	TEMPORARY BENCH MARK
INTX	INTERSECTION	TCP	TEMPORARY CONSTRUCTION PERMIT/ TRAFFIC CONTROL PLAN
INV	INVERT	TELE	TELEPHONE
KB	KEYBOX	TH	TEST HOLE
LF	LINEAR FOOT	TW	TOP OF WALL
LT, L	LEFT	TYP	TYPICAL
LUM	LUMINAIRE	UG	UNDERGROUND
MAX	MAXIMUM	UON	UNLESS OTHERWISE NOTED
ME	MATCH EXISTING	UTIL	UTILITY
MH	MANHOLE	VERT	VERTICAL
MIN	MINIMUM	VB	VALVE BOX
MON	MONUMENT	VC	VERTICAL CURVE
MSL	MEAN SEA LEVEL	W	WEST
N	NORTH	W/	WITH
N/A	NOT APPLICABLE		
N.I.C.	NOT IN CONTRACT		
NTS	NOT TO SCALE		
NWT	NO WATER TABLE		

RECORD DRAWING

1. DATA PROVIDED BY: _____ TITLE: _____

THIS WILL SERVE TO CERTIFY THAT THESE RECORD DRAWINGS ARE A TRUE AND ACCURATE REPRESENTATION OF THE PROJECT AS CONSTRUCTED.

CONTRACTOR: _____

BY: _____ TITLE: _____ DATE: _____

2. DATA TRANSFERRED BY: _____ TITLE: _____

COMPANY: _____ DATE: _____

3. BASED ON PERIODIC FIELD OBSERVATIONS BY THE ENGINEER (OR AN INDIVIDUAL UNDER HIS/HER DIRECT SUPERVISION), THE CONTRACTOR-PROVIDED DATA APPEARS TO REPRESENT THE PROJECT AS CONSTRUCTED.

DATA TRANSFER CHECKED BY: _____ TITLE: _____

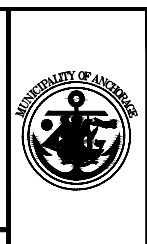
COMPANY: _____ DATE: _____

BY: _____

DATA	DRAWN BY	CHECKED BY	FIELD BOOKS	BM NO.	LOCATION	ELEV.	REV	DATE	DESCRIPTION	BY
BASE TOPOGRAPHY										
PROFILE										
STORM SEWER			DESIGN MOA BOOK No. xxxx, xxxx, GAAB xx	See MOA Benchmark Book, Page x-x	xxx.xx					
WATER/SANITARY SEWER			xxxx, xxxx, xxxx & xxxx	GAAB xx	See MOA Benchmark Book, Page x-x	xxx.xx				
GAS			STAKING							
TELEPHONE										
ELECTRIC										
DESIGN			ASBUILT							
QUANTITIES			CONTRACTOR							
PRELIMINARY/FINAL			INSPECTOR							
MUNICIPAL/STATE										
PLAN CHECK										
CONSTRUCTION RECORD										
VERTICAL DATUM										
REVISIONS										
CONSULTANT										
SEAL										

CRW ENGINEERING GROUP, LLC

3940 ARCTIC BLVD. SUITE 300
ANCHORAGE, ALASKA 99503
PHONE: (907) 562-3252
#AEC1882-AK

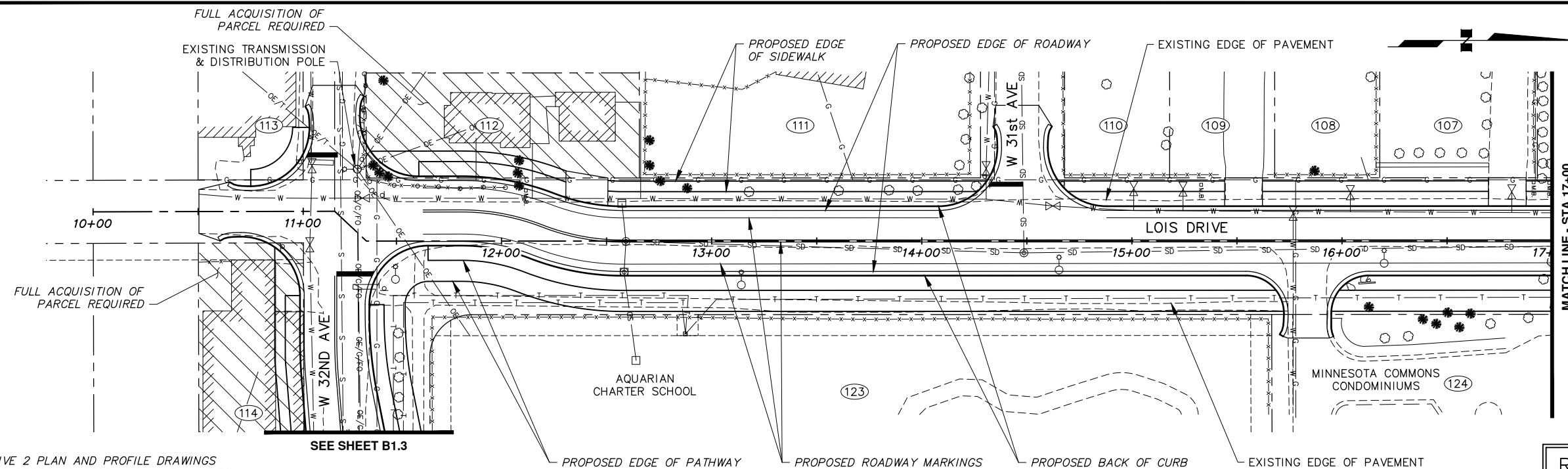


PROJECT MANAGEMENT AND ENGINEERING DEPARTMENT

19-08 LOIS DRIVE AND W 32ND AVE PATHWAY W BENSON BOULEVARD TO MINNESOTA DRIVE SCHED

LEGEND & ABBREVIATIONS

SCALE HOR. VER. GRID SW1628 DATE AUG 2020 STATUS DSR SHEET B1.0 of XX

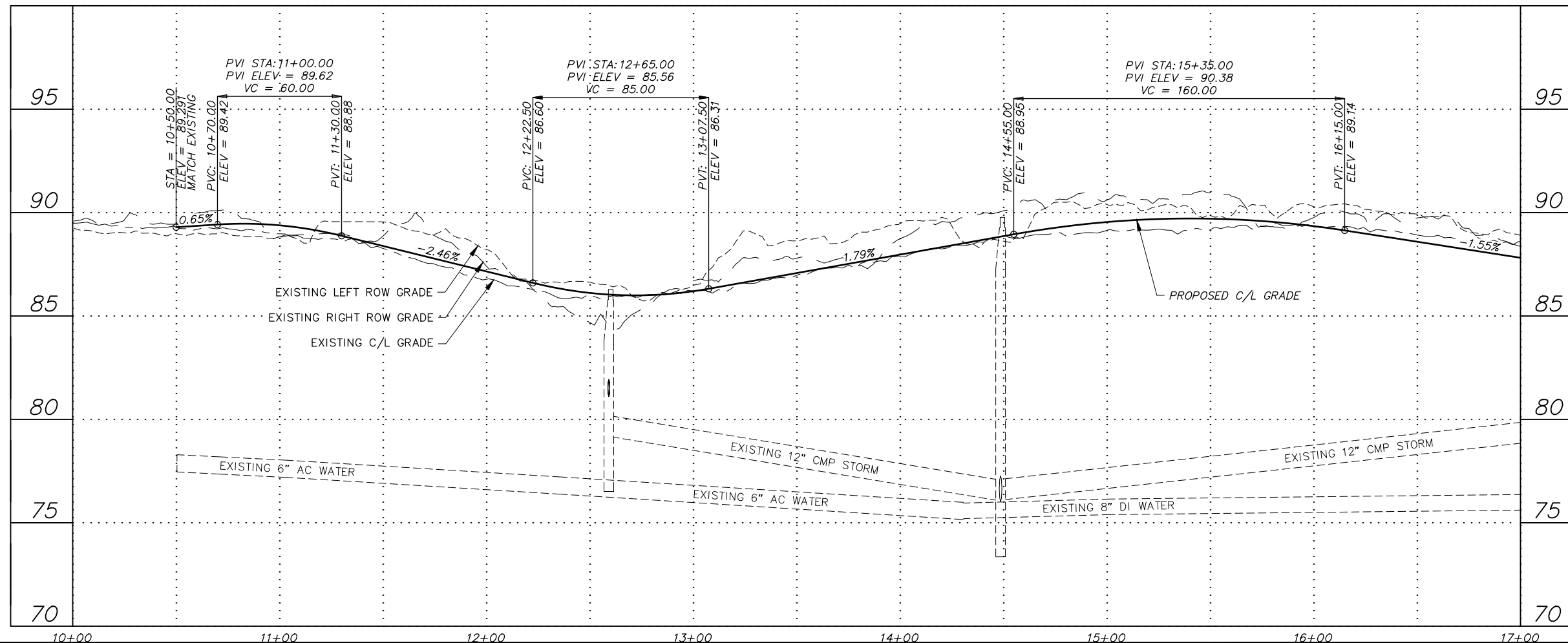


NOTES:

- SEE ALTERNATIVE 2 PLAN AND PROFILE DRAWINGS FOR LOIS DRIVE PROPOSED STORM DRAIN FACILITIES.
- ELECTRICAL IMPROVEMENTS NOT SHOWN

SEE SHEET B1.3

**ROADWAY ALTERNATIVE #1
WITH INTERSECTION ALT #1**



File: I:\labdata\10145.00 Lois Drive And W 32nd Ave Pathway\00 CADD 2019\01 Working Set\01 Civil\10145.00 Roadway-Plan & Profile_Alt 1.dwg

RECORD DRAWING
 1. DATA PROVIDED BY: _____ TITLE: _____
 THIS WILL SERVE TO CERTIFY THAT THESE RECORD DRAWINGS ARE A TRUE AND ACCURATE REPRESENTATION OF THE PROJECT AS CONSTRUCTED.
 CONTRACTOR: _____ DATE: _____
 BY: _____ TITLE: _____
 2. DATA TRANSFERRED BY: _____ TITLE: _____
 COMPANY: _____ DATE: _____
 3. BASED ON PERIODIC FIELD OBSERVATIONS BY THE ENGINEER (OR AN INDIVIDUAL UNDER HIS/HER DIRECT SUPERVISION), THE CONTRACTOR-PROVIDED DATA APPEARS TO REPRESENT THE PROJECT AS CONSTRUCTED.
 DATA TRANSFER CHECKED BY: _____ TITLE: _____
 COMPANY: _____ DATE: _____
 BY: _____

DATA	DRAWN BY	CHECKED BY
BASE		
TOPOGRAPHY		
PROFILE		
STORM SEWER		
WATER/SANITARY SEWER		
GAS		
TELEPHONE		
ELECTRIC		
DESIGN		
QUANTITIES		
PRELIMINARY/FINAL		
MUNICIPAL/STATE		

FIELD BOOKS	BM NO.	LOCATION	ELEV.	REV	DATE	DESCRIPTION	BY
DESIGN MOA BOOK No. xxxx, xxxx,	GAAB xx	See MOA Benchmark Book, Page x-x	xxx.xx				
xxxx, xxxx, xxxx & xxxx	GAAB xx	See MOA Benchmark Book, Page x-x	xxx.xx				
STAKING							

PLAN CHECK	CONSTRUCTION RECORD	VERTICAL DATUM	REVISIONS	CONSULTANT	SEAL



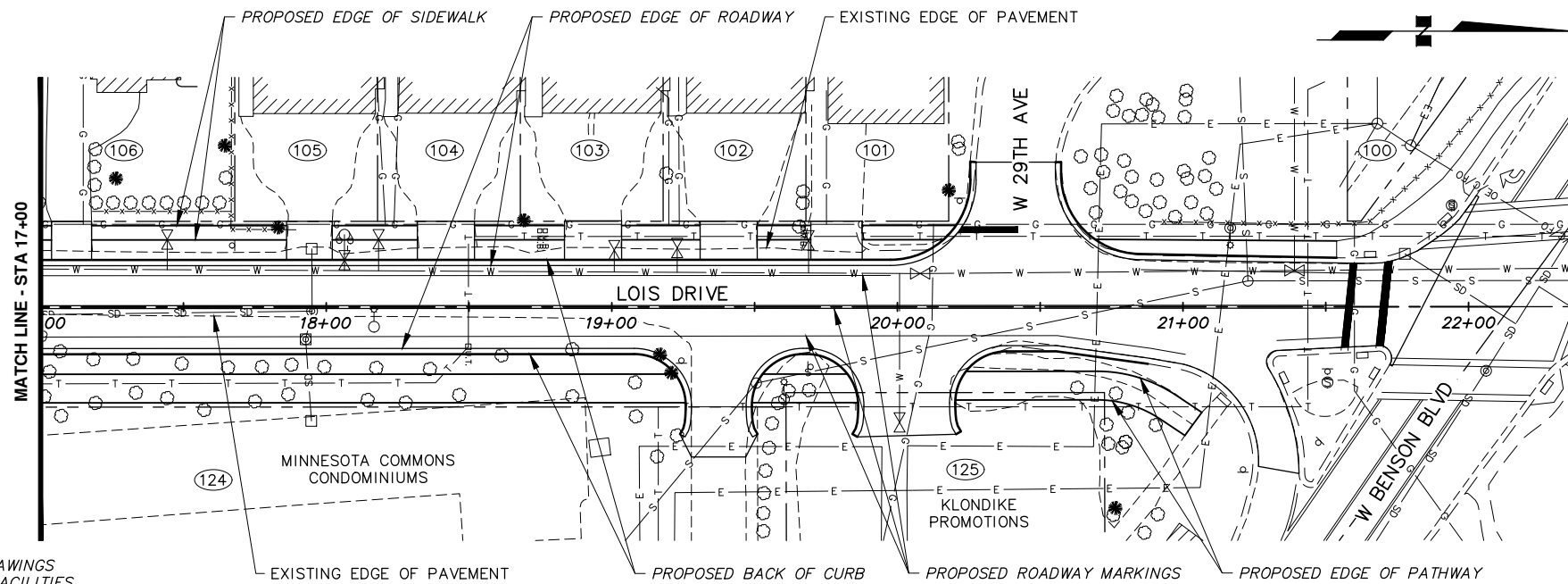
CRW ENGINEERING GROUP, LLC
 3940 ARCTIC BLVD, SUITE 300
 ANCHORAGE, ALASKA 99503
 PHONE: (907) 562-3252
 #AEC1882-AK



PROJECT MANAGEMENT AND ENGINEERING DEPARTMENT
 19-08 LOIS DRIVE AND W 32ND AVE PATHWAY SCHED A
 W BENSON BOULEVARD TO MINNESOTA DRIVE
ALT 1 - ROADWAY PLAN & PROFILE (LOIS DRIVE)
 BOP TO STA 17+00

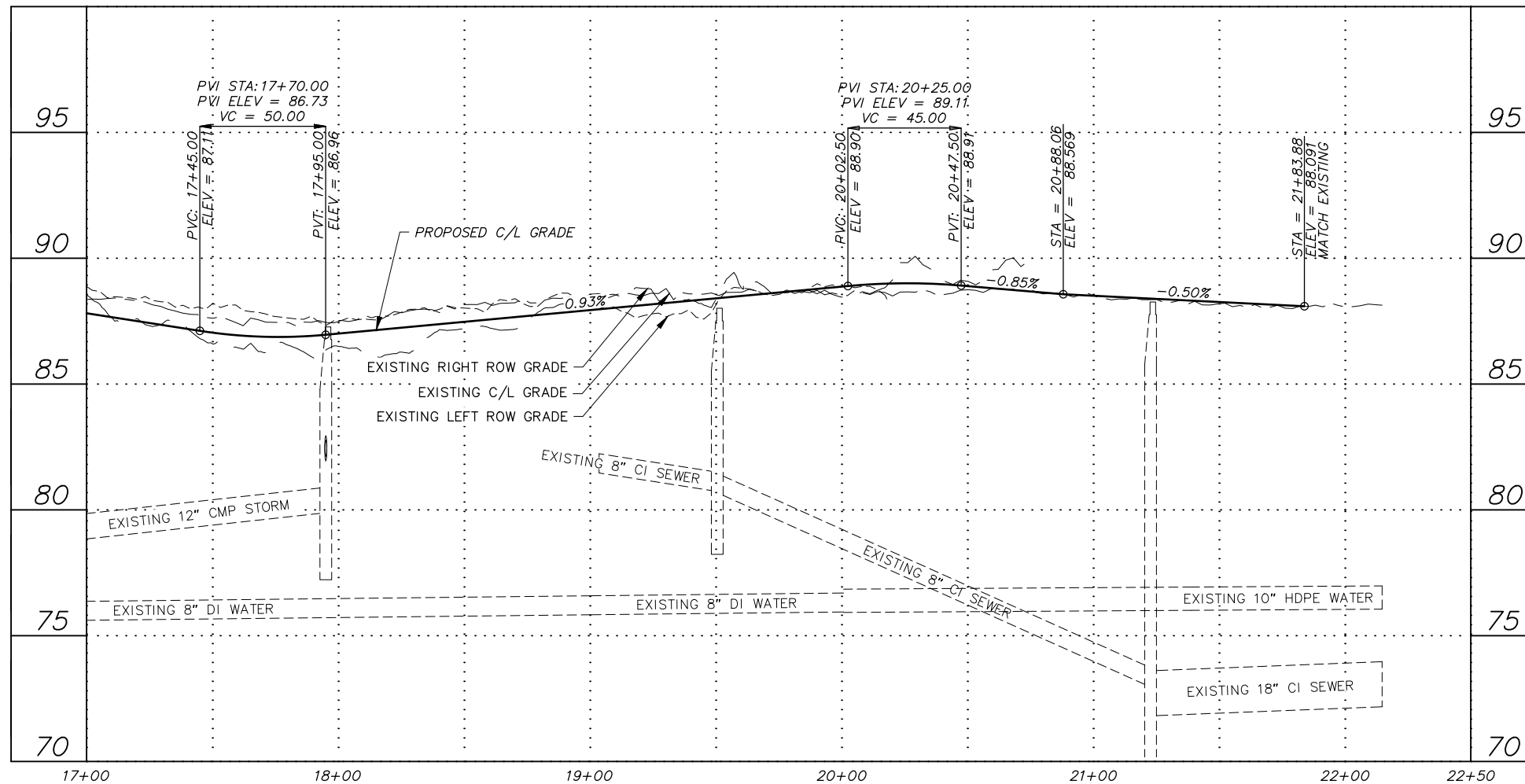
SCALE HOR. 1"=30'
 VER. 1"=3'

GRID SW628
 DATE SEP 2020 STATUS DSR SHEET B1.1 of B1.4



ROADWAY ALTERNATIVE #1
WITH INTERSECTION ALT #1

- NOTES:**
- SEE ALTERNATIVE 2 PLAN AND PROFILE DRAWINGS FOR LOIS DRIVE PROPOSED STORM DRAIN FACILITIES.
 - ELECTRICAL IMPROVEMENTS NOT SHOWN



File: I:\labdata\10145.00 Lois Drive And W 32nd Ave Pathway\00 CADD 2019\01 Working Set\01 Civil\10145.00 Roadway-Plan & Profile_Alt 1.dwg

RECORD DRAWING

1. DATA PROVIDED BY: _____ TITLE: _____
 THIS WILL SERVE TO CERTIFY THAT THESE RECORD DRAWINGS ARE A TRUE AND ACCURATE REPRESENTATION OF THE PROJECT AS CONSTRUCTED.
 CONTRACTOR: _____ DATE: _____
 BY: _____

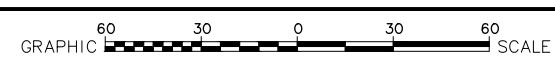
2. DATA TRANSFERRED BY: _____ TITLE: _____
 COMPANY: _____ DATE: _____

3. BASED ON PERIODIC FIELD OBSERVATIONS BY THE ENGINEER (OR AN INDIVIDUAL UNDER HIS/HER DIRECT SUPERVISION), THE CONTRACTOR-PROVIDED DATA APPEARS TO REPRESENT THE PROJECT AS CONSTRUCTED.
 DATA TRANSFER CHECKED BY: _____ TITLE: _____
 COMPANY: _____ DATE: _____
 BY: _____

DATA	DRAWN BY	CHECKED BY
BASE		
TOPOGRAPHY		
PROFILE		
STORM SEWER		
WATER/SANITARY SEWER		
GAS		
TELEPHONE		
ELECTRIC		
DESIGN		
QUANTITIES		
PRELIMINARY/FINAL		
MUNICIPAL/STATE		

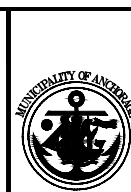
FIELD BOOKS	BM NO.	LOCATION	ELEV.	REV	DATE	DESCRIPTION	BY
DESIGN MOA BOOK No. xxxx, xxxx,	GAAB xx	See MOA Benchmark Book, Page x-x	xxx.xx				
xxxx, xxxx, xxxx & xxxx	GAAB xx	See MOA Benchmark Book, Page x-x	xxx.xx				
STAKING							

PLAN CHECK CONSTRUCTION RECORD VERTICAL DATUM REVISIONS CONSULTANT SEAL



CRW ENGINEERING GROUP, LLC

3940 ARCTIC BLVD. SUITE 300
 ANCHORAGE, ALASKA 99503
 PHONE: (907) 562-3252
 #AECLE882-AK



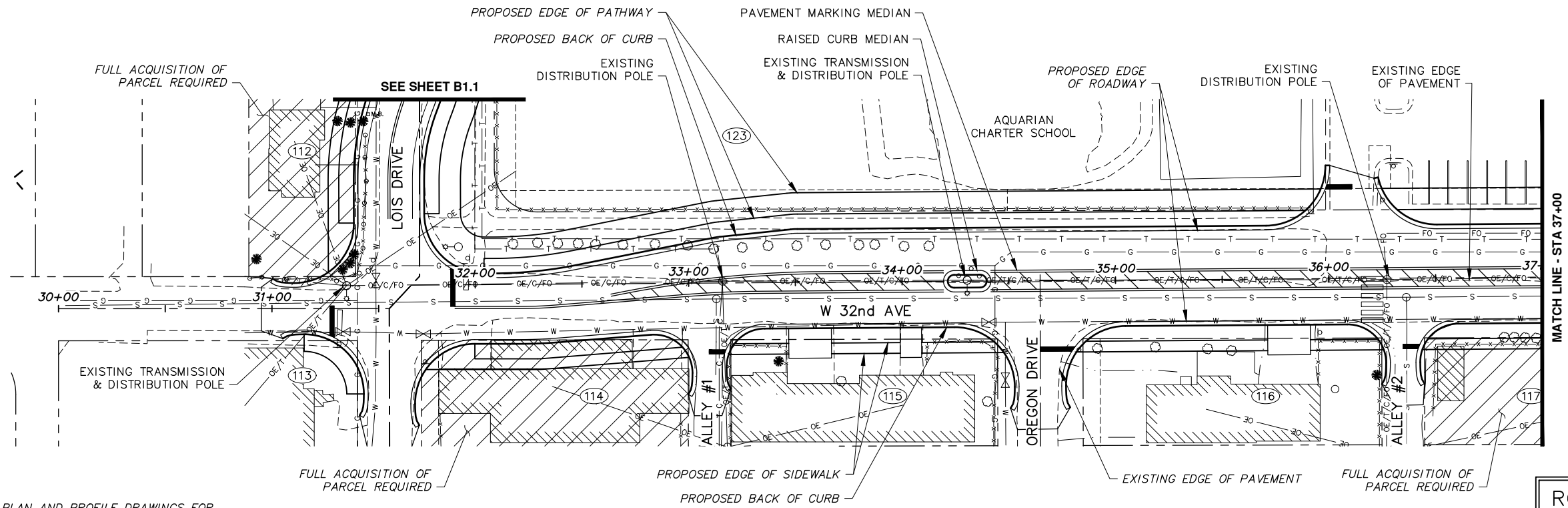
PROJECT MANAGEMENT AND ENGINEERING DEPARTMENT

19-08 LOIS DRIVE AND W 32ND AVE PATHWAY SCHED A
 W BENSON BOULEVARD TO MINNESOTA DRIVE

ALT 1 – ROADWAY PLAN & PROFILE (LOIS DRIVE)

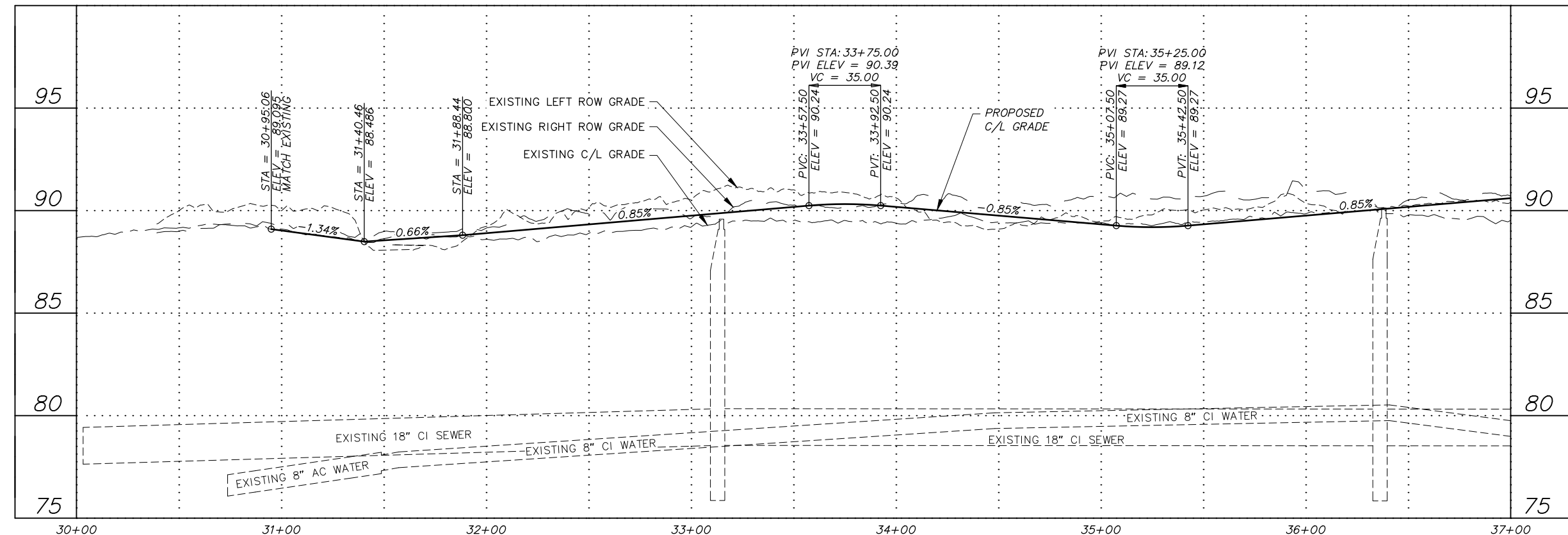
STA 17+00 TO EOP

SCALE: HOR. 1"=30' GRID SW622
 VER. 1"=3' DATE SEP 2020 STATUS DSR SHEET B1.2 of B1.4



- NOTES:**
- SEE ALTERNATIVE 3 PLAN AND PROFILE DRAWINGS FOR 32ND AVENUE PROPOSED STORM DRAIN FACILITIES.
 - ELECTRICAL IMPROVEMENTS NOT SHOWN.

ROADWAY ALTERNATIVE #1
 WITH INTERSECTION ALT #1



File: I:\labdata\10145.00 Lois Drive And W 32nd Ave Pathway\00 CADD 2019\01 Working Set\01 Civil\10145.00 Roadway-Plan & Profile_Alt 1.dwg

RECORD DRAWING

1. DATA PROVIDED BY: _____ TITLE: _____
 THIS WILL SERVE TO CERTIFY THAT THESE RECORD DRAWINGS ARE A TRUE AND ACCURATE REPRESENTATION OF THE PROJECT AS CONSTRUCTED.
 CONTRACTOR: _____ TITLE: _____ DATE: _____
 BY: _____

2. DATA TRANSFERRED BY: _____ TITLE: _____
 COMPANY: _____ DATE: _____

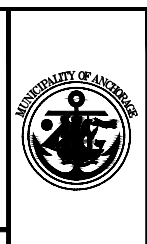
3. BASED ON PERIODIC FIELD OBSERVATIONS BY THE ENGINEER (OR AN INDIVIDUAL UNDER HIS/HER DIRECT SUPERVISION), THE CONTRACTOR-PROVIDED DATA APPEARS TO REPRESENT THE PROJECT AS CONSTRUCTED.
 DATA TRANSFER CHECKED BY: _____ TITLE: _____
 COMPANY: _____ DATE: _____
 BY: _____

DATA	DRAWN BY	CHECKED BY	FIELD BOOKS	BM NO.	LOCATION	ELEV.	REV	DATE	DESCRIPTION	BY
BASE			DESIGN MOA BOOK No. xxx, xxxx, xxxxx	GAAB xx	See MOA Benchmark Book, Page x-x	xxx.xx				
TOPOGRAPHY			xxxx, xxxxx, xxxxx & xxxxx	GAAB xx	See MOA Benchmark Book, Page x-x	xxx.xx				
PROFILE			STAKING							
STORM SEWER										
WATER/SANITARY SEWER										
GAS										
TELEPHONE										
ELECTRIC										
DESIGN			ASBUILT							
QUANTITIES			CONTRACTOR							
PRELIMINARY/FINAL			INSPECTOR							
MUNICIPAL/STATE										

GRAPHIC SCALE: 60 30 0 30 60

BASIS OF THIS DATUM: GAAB 1972 ADJUST

CRW ENGINEERING GROUP, LLC
 3940 ARCTIC BLVD. SUITE 300
 ANCHORAGE, ALASKA 99503
 PHONE: (907) 562-3252
 #AEC1882-AK



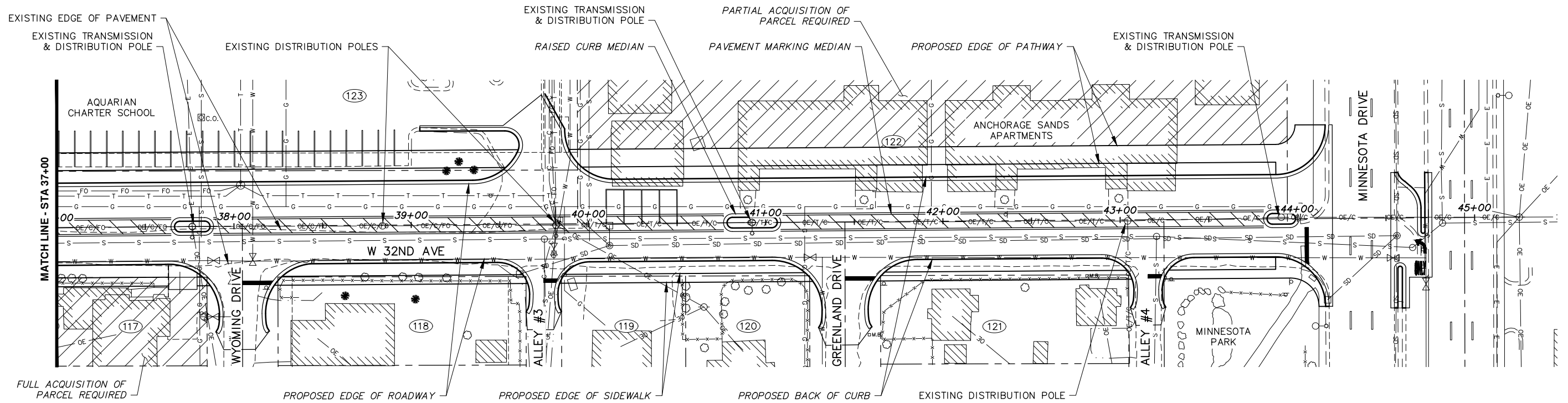
PROJECT MANAGEMENT AND ENGINEERING DEPARTMENT

19-08 LOIS DRIVE AND W 32ND AVE PATHWAY SCHED A
 W BENSON BOULEVARD TO MINNESOTA DRIVE
 ALT 1 - ROADWAY PLAN & PROFILE
 (W 32ND AVE)
 BOP TO STA 37+00

SCALE: HOR. 1"=30'
 VER. 1"=3'

GRID SW628
 DATE SEP 2020 STATUS DSR

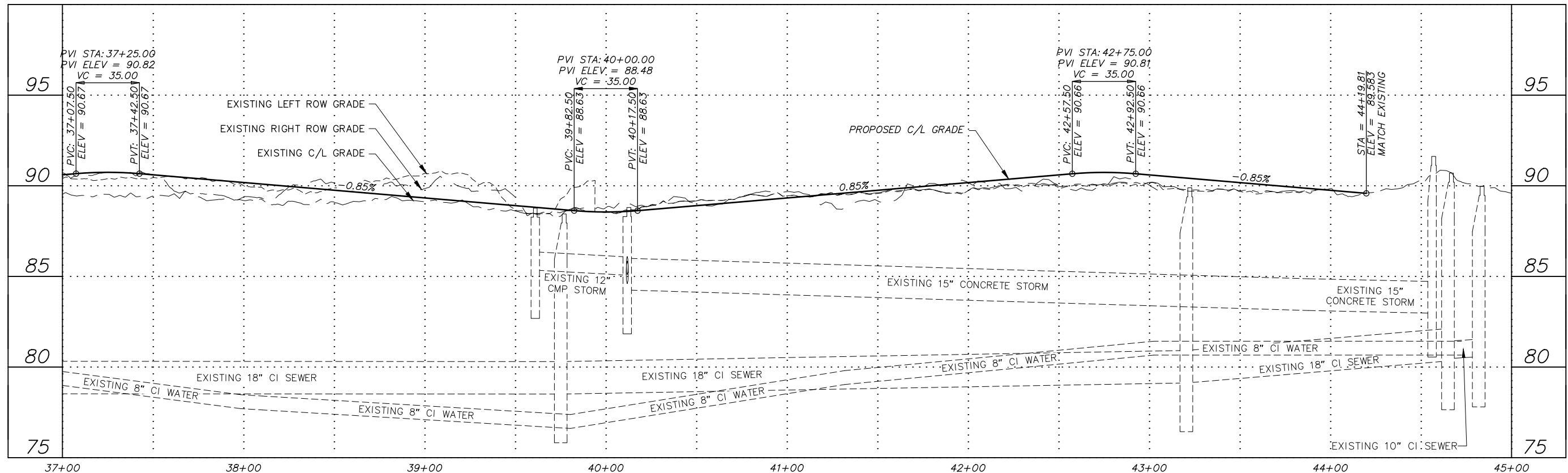
B1.3 of B1.4
 SHEET



**ROADWAY ALTERNATIVE #1
WITH INTERSECTION ALT #1**

NOTES:

1. SEE ALTERNATIVE 3 PLAN AND PROFILE DRAWINGS FOR 32ND AVENUE PROPOSED STORM DRAIN FACILITIES.
2. ELECTRICAL IMPROVEMENTS NOT SHOWN.



File: I:\webdata\10145.00 Lois Drive And W 32nd Ave Pathway\00 CADD 2019\01 Working Set\01 Civil\10145.00 Roadway-Plan & Profile_Alt 1.dwg

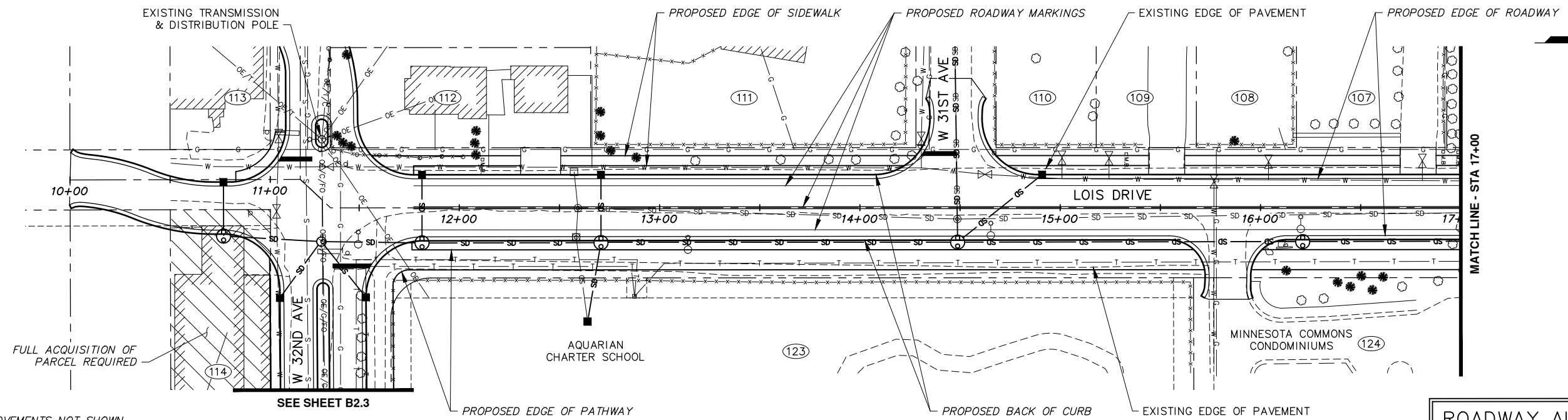
RECORD DRAWING	
1. DATA PROVIDED BY: _____ TITLE: _____	_____
THIS WILL SERVE TO CERTIFY THAT THESE RECORD DRAWINGS ARE A TRUE AND ACCURATE REPRESENTATION OF THE PROJECT AS CONSTRUCTED.	
CONTRACTOR: _____ TITLE: _____ DATE: _____	
2. DATA TRANSFERRED BY: _____ TITLE: _____	_____
COMPANY: _____ DATE: _____	
3. BASED ON PERIODIC FIELD OBSERVATIONS BY THE ENGINEER (OR AN INDIVIDUAL UNDER HIS/HER DIRECT SUPERVISION), THE CONTRACTOR-PROVIDED DATA APPEARS TO REPRESENT THE PROJECT AS CONSTRUCTED.	
DATA TRANSFER CHECKED BY: _____ TITLE: _____	_____
COMPANY: _____ DATE: _____	
BY: _____	_____

DATA	DRAWN BY	CHECKED BY	GRAPHIC SCALE 60 30 0 30 60			
BASE	---	---	FIELD BOOKS	BM NO.	LOCATION	ELEV.
TOPOGRAPHY	---	---	DESIGN MOA BOOK No. xxx, xxx, xxx, xxx	GAAB xx	See MOA Benchmark Book, Page x-x	xxx.xx
PROFILE	---	---	STAKING	GAAB xx	See MOA Benchmark Book, Page x-x	xxx.xx
STORM SEWER	---	---	ASBUILT	CONTRACTOR	BASIS OF THIS DATUM GAAB 1972 ADJUST	
WATER/SANITARY SEWER	---	---	INSPECTOR			
GAS	---	---				
TELEPHONE	---	---				
ELECTRIC	---	---				
DESIGN	---	---				
QUANTITIES	---	---				
PRELIMINARY/FINAL	---	---				
MUNICIPAL/STATE	---	---				
PLAN CHECK	---	---	CONSTRUCTION RECORD	VERTICAL DATUM	REVISIONS	CONSULTANT

CRW ENGINEERING GROUP, LLC
3940 ARCTIC BLVD. SUITE 300
ANCHORAGE, ALASKA 99503
PHONE: (907) 562-3252
#AECLE82-AK

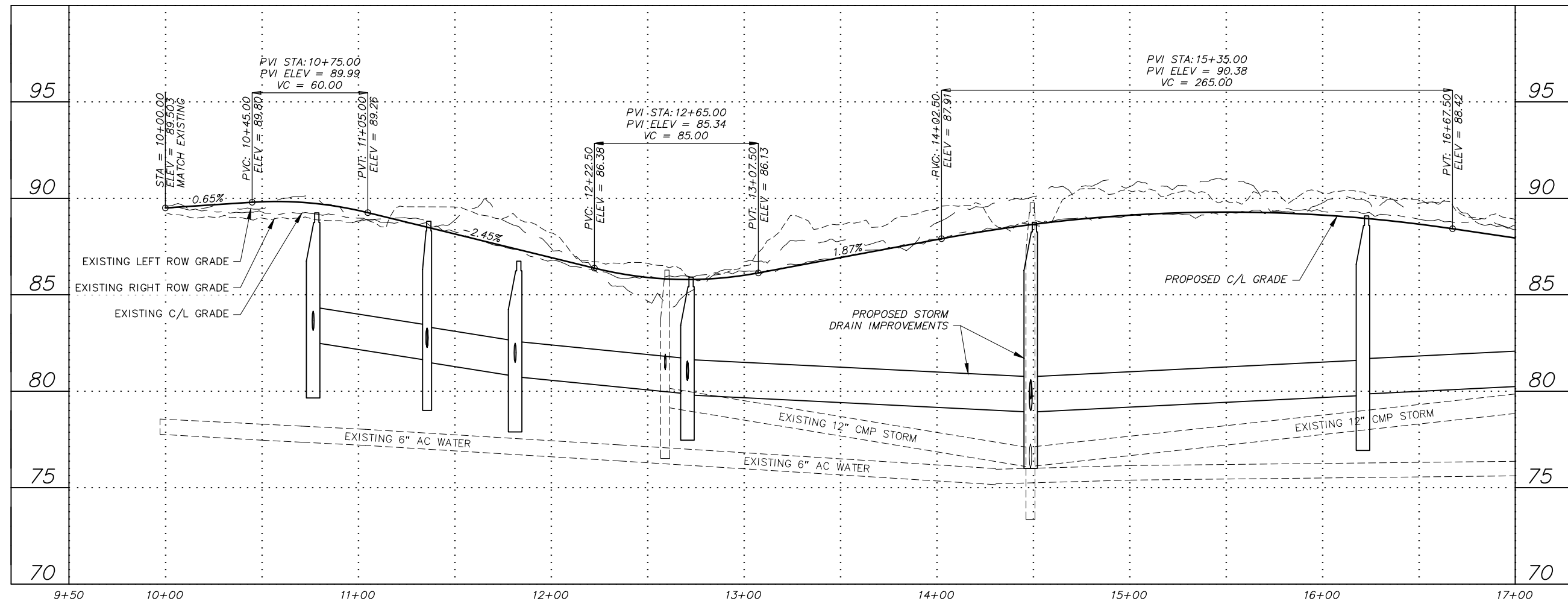


PROJECT MANAGEMENT AND ENGINEERING DEPARTMENT		
19-08	LOIS DRIVE AND W 32ND AVE PATHWAY W BENSON BOULEVARD TO MINNESOTA DRIVE	SCHED A
ALT 1 - ROADWAY PLAN & PROFILE (W 32ND AVE)		
STA 37+00 TO EOP		
SCALE HOR. 1"=30' VER. 1"=3'	GRID SW628 DATE SEP 2020	STATUS DSR
SHEET		B1.4 of B1.4



NOTES:
 1. ELECTRICAL IMPROVEMENTS NOT SHOWN

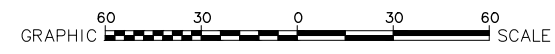
**ROADWAY ALTERNATIVE #2
 WITH INTERSECTION ALT #2**



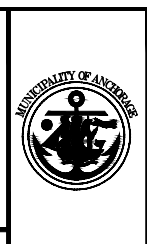
File: I:\labdata\10145.00 Lois Drive And W 32nd Ave Pathway\00 CADD 2019\01 Working Set\01 Civil\10145.00 Roadway-Plan & Profile_Alt 2.dwg

RECORD DRAWING
 1. DATA PROVIDED BY: _____ TITLE: _____
 THIS WILL SERVE TO CERTIFY THAT THESE RECORD DRAWINGS ARE A TRUE AND ACCURATE REPRESENTATION OF THE PROJECT AS CONSTRUCTED.
 CONTRACTOR: _____ DATE: _____
 BY: _____
 2. DATA TRANSFERRED BY: _____ TITLE: _____
 COMPANY: _____ DATE: _____
 3. BASED ON PERIODIC FIELD OBSERVATIONS BY THE ENGINEER (OR AN INDIVIDUAL UNDER HIS/HER DIRECT SUPERVISION), THE CONTRACTOR-PROVIDED DATA APPEARS TO REPRESENT THE PROJECT AS CONSTRUCTED.
 DATA TRANSFER CHECKED BY: _____ TITLE: _____
 COMPANY: _____ DATE: _____
 BY: _____

DATA	DRAWN BY	CHECKED BY	FIELD BOOKS	BM NO.	LOCATION	ELEV.	REV	DATE	DESCRIPTION	BY
BASE										
TOPOGRAPHY										
PROFILE										
STORM SEWER			DESIGN MOA BOOK No. xxxx, xxxx,	GAAB xx	See MOA Benchmark Book, Page x-x	xxx.xx				
WATER/SANITARY SEWER			xxxx, xxxx, xxxx & xxxx	GAAB xx	See MOA Benchmark Book, Page x-x	xxx.xx				
GAS			STAKING							
TELEPHONE										
ELECTRIC										
DESIGN			ASBUILT							
QUANTITIES			CONTRACTOR							
PRELIMINARY/FINAL			INSPECTOR							
MUNICIPAL/STATE										



CRW ENGINEERING GROUP, LLC
 3940 ARCTIC BLVD. SUITE 300
 ANCHORAGE, ALASKA 99503
 PHONE: (907) 562-3252
 #AECLE82-AK

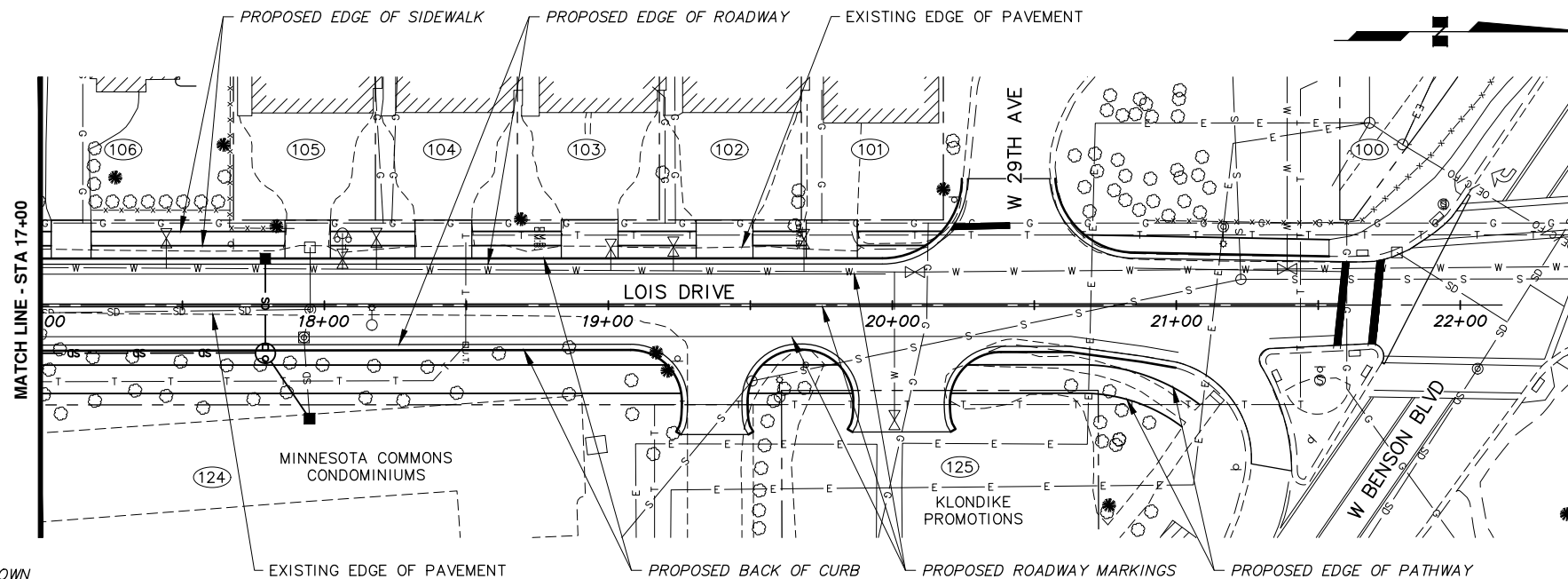


PROJECT MANAGEMENT AND ENGINEERING DEPARTMENT
 19-08 LOIS DRIVE AND W 32ND AVE PATHWAY SCHED A
 W BENSON BOULEVARD TO MINNESOTA DRIVE
ALT 2 - ROADWAY PLAN & PROFILE (LOIS DRIVE)
 BOP TO STA 17+00

SCALE HOR. 1"=30'
 VER. 1"=3'

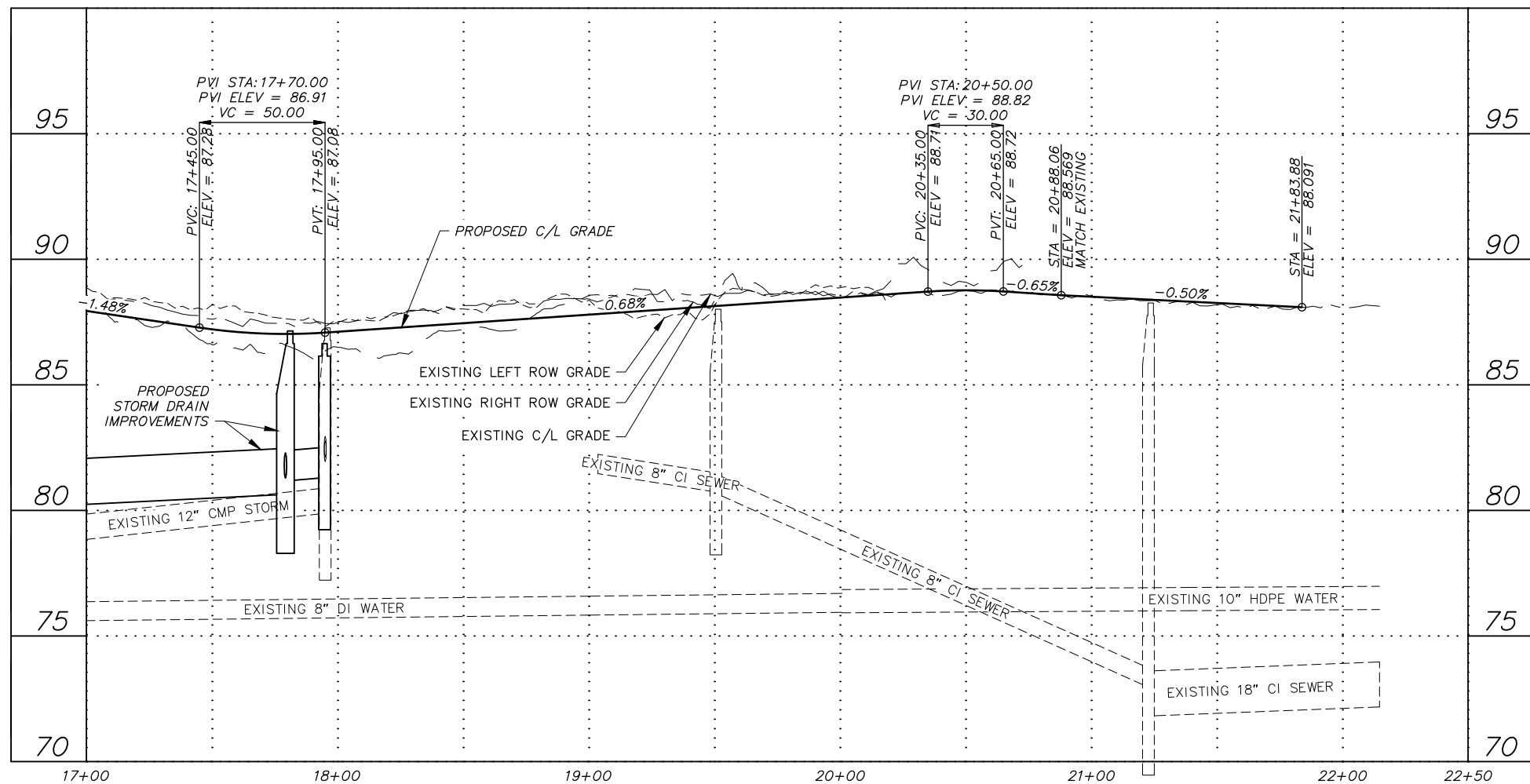
GRID SW628
 DATE SEP 2020 STATUS DSR

B2.1 of B2.4
 SHEET



ROADWAY ALTERNATIVE #2
WITH INTERSECTION ALT #2

- NOTES:**
- ELECTRICAL IMPROVEMENTS NOT SHOWN



File: I:\labdata\10145.00 Lois Drive And W 32nd Ave Pathway\00 CADD 2019\01 Working Set\01 Civil\10145.00 Roadway-Plan & Profile_Alt 2.dwg

RECORD DRAWING

1. DATA PROVIDED BY: _____ TITLE: _____
 THIS WILL SERVE TO CERTIFY THAT THESE RECORD DRAWINGS ARE A TRUE AND ACCURATE REPRESENTATION OF THE PROJECT AS CONSTRUCTED.
 CONTRACTOR: _____ DATE: _____
 BY: _____

2. DATA TRANSFERRED BY: _____ TITLE: _____
 COMPANY: _____ DATE: _____

3. BASED ON PERIODIC FIELD OBSERVATIONS BY THE ENGINEER (OR AN INDIVIDUAL UNDER HIS/HER DIRECT SUPERVISION), THE CONTRACTOR-PROVIDED DATA APPEARS TO REPRESENT THE PROJECT AS CONSTRUCTED.
 DATA TRANSFER CHECKED BY: _____ TITLE: _____
 COMPANY: _____ DATE: _____
 BY: _____

DATA	DRAWN BY	CHECKED BY
BASE		
TOPOGRAPHY		
PROFILE		
STORM SEWER		
WATER/SANITARY SEWER		
GAS		
TELEPHONE		
ELECTRIC		
DESIGN		
QUANTITIES		
PRELIMINARY/FINAL		
MUNICIPAL/STATE		

FIELD BOOKS	BM NO.	LOCATION	ELEV.	REV	DATE	DESCRIPTION	BY
DESIGN MOA BOOK No. xxxx, xxxx,	GAAB xx	See MOA Benchmark Book, Page x-x	xxx.xx				
xxxx, xxxx, xxxx & xxxx	GAAB xx	See MOA Benchmark Book, Page x-x	xxx.xx				
STAKING							

PLAN CHECK CONSTRUCTION RECORD VERTICAL DATUM REVISIONS CONSULTANT SEAL

GRAPHIC SCALE: 60 30 0 30 60

CRW ENGINEERING GROUP, LLC
 3940 ARCTIC BLVD, SUITE 300
 ANCHORAGE, ALASKA 99503
 PHONE: (907) 562-3252
 #AECLE82-AK



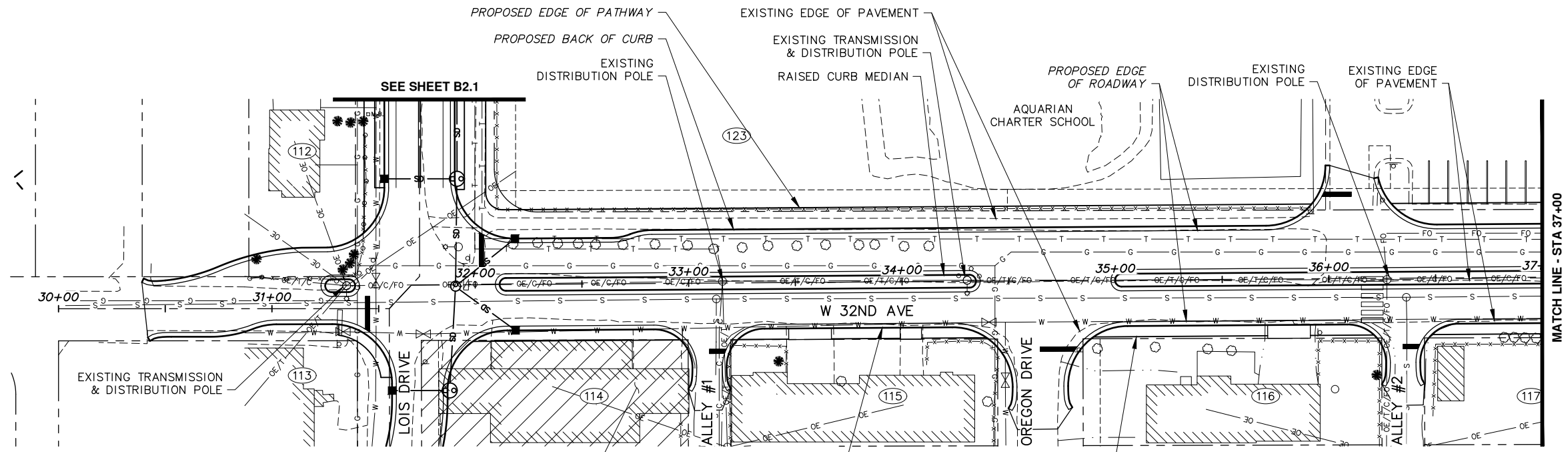
PROJECT MANAGEMENT AND ENGINEERING DEPARTMENT

19-08 LOIS DRIVE AND W 32ND AVE PATHWAY SCHED A
 W BENSON BOULEVARD TO MINNESOTA DRIVE

ALT 2 - ROADWAY PLAN & PROFILE (LOIS DRIVE)

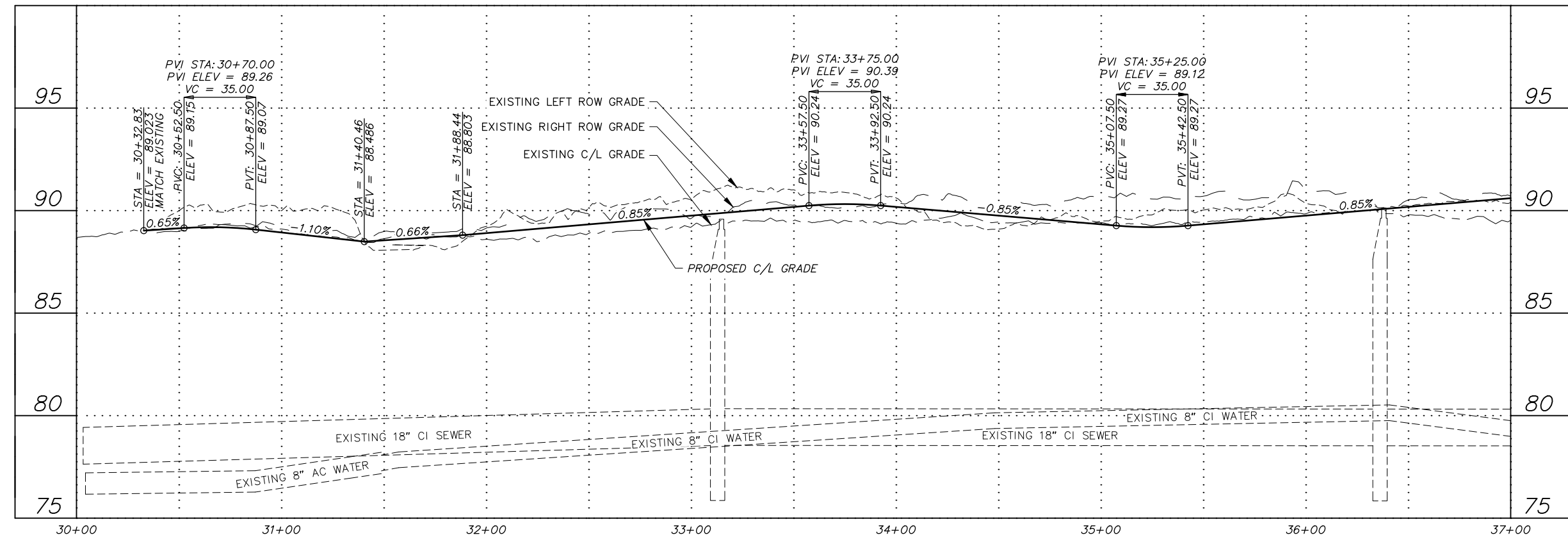
STA 17+00 TO EOP

SCALE: HOR. 1"=30' GRID SW628
 VER. 1"=3' DATE SEP 2020 STATUS DSR SHEET B2.2 of B2.4



- NOTES:**
- SEE ALTERNATIVE 3 PLAN AND PROFILE DRAWINGS FOR 32ND AVENUE PROPOSED STORM DRAIN FACILITIES.
 - ELECTRICAL IMPROVEMENTS NOT SHOWN

ROADWAY ALTERNATIVE #2
WITH INTERSECTION ALT #2



File: s:\labdata\10145.00 Lois Drive And W 32nd Ave Pathway\00 CADD 2019\01 Working Set\01 Civil\10145.00 Roadway-Plan & Profile_Alt 2.dwg

RECORD DRAWING

1. DATA PROVIDED BY: _____ TITLE: _____
 THIS WILL SERVE TO CERTIFY THAT THESE RECORD DRAWINGS ARE A TRUE AND ACCURATE REPRESENTATION OF THE PROJECT AS CONSTRUCTED.
 CONTRACTOR: _____ TITLE: _____ DATE: _____
 BY: _____

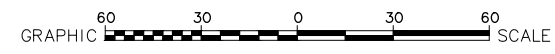
2. DATA TRANSFERRED BY: _____ TITLE: _____
 COMPANY: _____ DATE: _____

3. BASED ON PERIODIC FIELD OBSERVATIONS BY THE ENGINEER (OR AN INDIVIDUAL UNDER HIS/HER DIRECT SUPERVISION), THE CONTRACTOR-PROVIDED DATA APPEARS TO REPRESENT THE PROJECT AS CONSTRUCTED.
 DATA TRANSFER CHECKED BY: _____ TITLE: _____
 COMPANY: _____ DATE: _____
 BY: _____

DATA	DRAWN BY	CHECKED BY
BASE		
TOPOGRAPHY		
PROFILE		
STORM SEWER		
WATER/SANITARY SEWER		
GAS		
TELEPHONE		
ELECTRIC		
DESIGN		
QUANTITIES		
PRELIMINARY/FINAL		
MUNICIPAL/STATE		

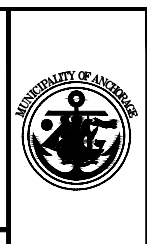
FIELD BOOKS	BM NO.	LOCATION	ELEV.	REV	DATE	DESCRIPTION	BY
DESIGN MOA BOOK No. xxx, xxxx, xxxxx	GAAB xx	See MOA Benchmark Book, Page x-x	xxx.xx				
xxxx, xxxxx, xxxxx & xxxxx	GAAB xx	See MOA Benchmark Book, Page x-x	xxx.xx				
STAKING							

PLAN CHECK	CONSTRUCTION RECORD	VERTICAL DATUM	REVISIONS	CONSULTANT	SEAL



CRW ENGINEERING GROUP, LLC

3940 ARCTIC BLVD, SUITE 300
 ANCHORAGE, ALASKA 99503
 PHONE: (907) 562-3252
 #AEC1882-AK

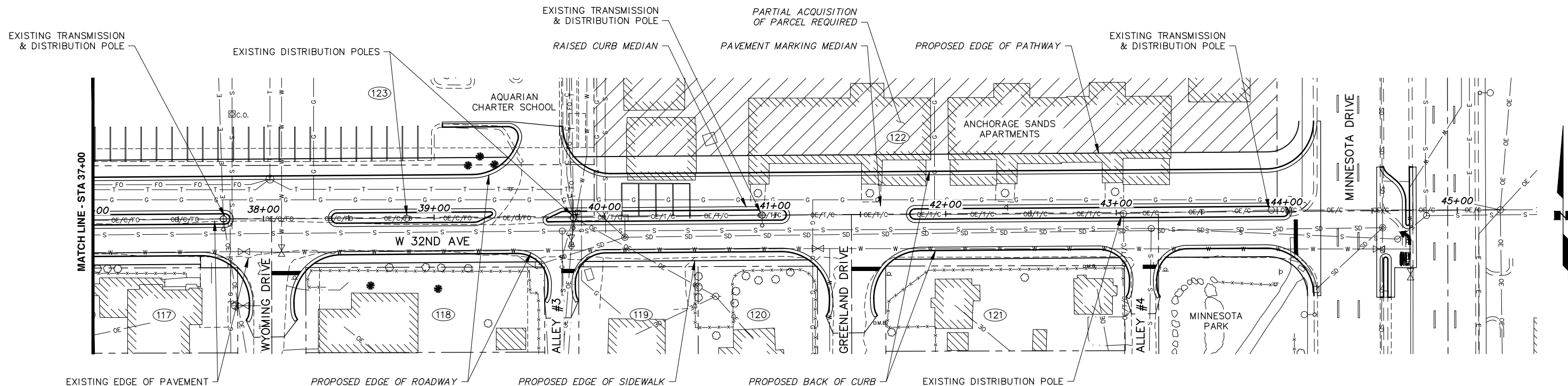


PROJECT MANAGEMENT AND ENGINEERING DEPARTMENT

19-08 LOIS DRIVE AND W 32ND AVE PATHWAY SCHED A
 W BENSON BOULEVARD TO MINNESOTA DRIVE
ALT 2 - ROADWAY PLAN & PROFILE
 (W 32ND AVE)
 BOP TO STA 37+00

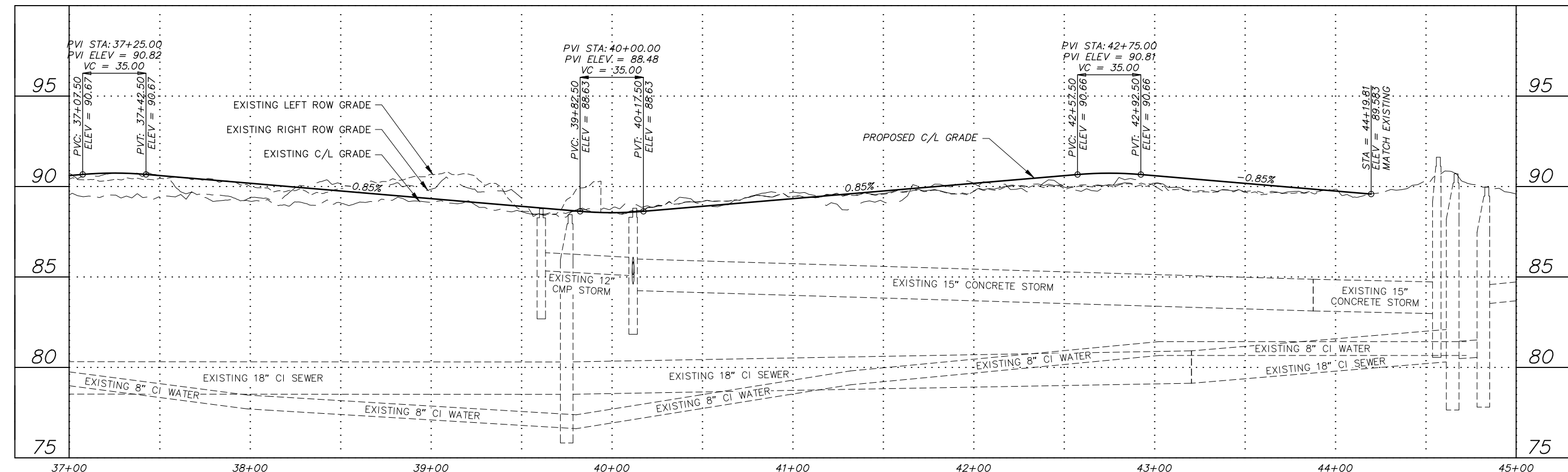
SCALE HOR. 1"=30'
 VER. 1"=3'

GRID SW628
 DATE SEP 2020 STATUS DSR SHEET B2.3 of B2.4



**ROADWAY ALTERNATIVE #2
WITH INTERSECTION ALT #2**

- NOTES:**
- SEE ALTERNATIVE 3 PLAN AND PROFILE DRAWINGS FOR 32ND AVENUE PROPOSED STORM DRAIN FACILITIES.
 - ELECTRICAL IMPROVEMENTS NOT SHOWN.



File: I:\labdata\10145.00 Lab Drive And W 32nd Ave Pathway\00 CADD 2019\01 Working Set\01 Civil\10145.00 Roadway-Plan & Profile_Alt 2.dwg

RECORD DRAWING

1. DATA PROVIDED BY: _____ TITLE: _____
 THIS WILL SERVE TO CERTIFY THAT THESE RECORD DRAWINGS ARE A TRUE AND ACCURATE REPRESENTATION OF THE PROJECT AS CONSTRUCTED.
 CONTRACTOR: _____ DATE: _____
 BY: _____

2. DATA TRANSFERRED BY: _____ TITLE: _____
 COMPANY: _____ DATE: _____

3. BASED ON PERIODIC FIELD OBSERVATIONS BY THE ENGINEER (OR AN INDIVIDUAL UNDER HIS/HER DIRECT SUPERVISION), THE CONTRACTOR-PROVIDED DATA APPEARS TO REPRESENT THE PROJECT AS CONSTRUCTED.
 DATA TRANSFER CHECKED BY: _____ TITLE: _____
 COMPANY: _____ DATE: _____
 BY: _____

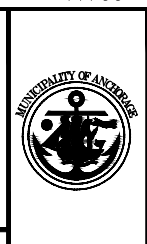
DATA	DRAWN BY	CHECKED BY
BASE		
TOPOGRAPHY		
PROFILE		
STORM SEWER		
WATER/SANITARY SEWER		
GAS		
TELEPHONE		
ELECTRIC		
DESIGN		
QUANTITIES		
PRELIMINARY/FINAL		
MUNICIPAL/STATE		

FIELD BOOKS	BM NO.	LOCATION	ELEV.	REV	DATE	DESCRIPTION	BY
DESIGN MOA BOOK No. xxxx, xxxx,	GAAB xx	See MOA Benchmark Book, Page x-x	xxx.xx				
xxxx, xxxx, xxxx & xxxx	GAAB xx	See MOA Benchmark Book, Page x-x	xxx.xx				
STAKING							

PLAN CHECK	CONSTRUCTION RECORD	VERTICAL DATUM	REVISIONS	CONSULTANT	SEAL

CRW ENGINEERING GROUP, LLC

3940 ARCTIC BLVD, SUITE 300
 ANCHORAGE, ALASKA 99503
 PHONE: (907) 562-3252
 #AEC1882-AK



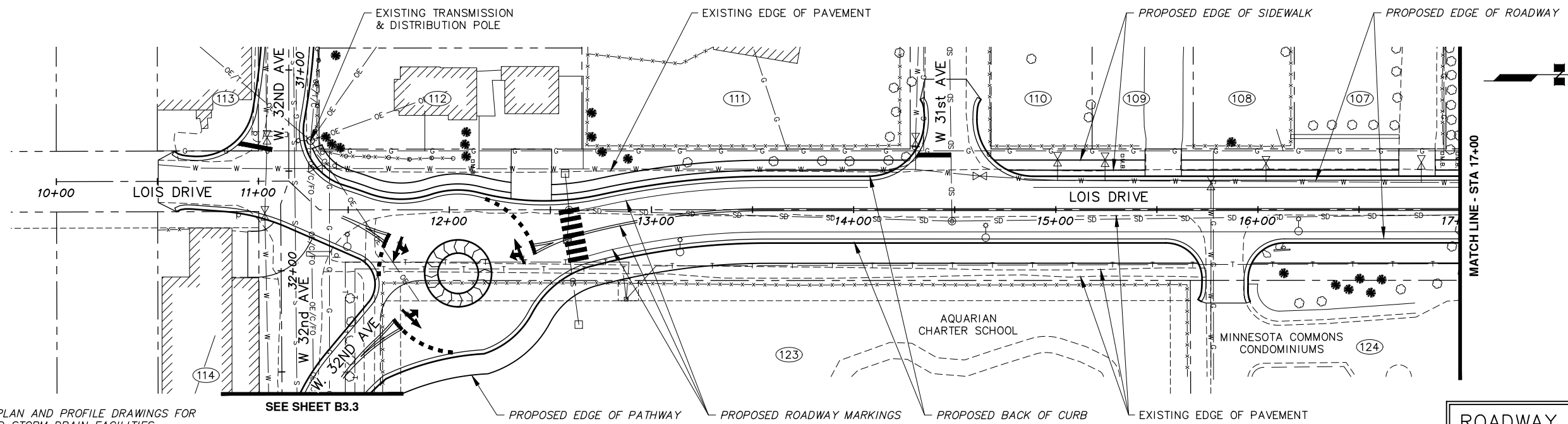
PROJECT MANAGEMENT AND ENGINEERING DEPARTMENT

19-08 LOIS DRIVE AND W 32ND AVE PATHWAY SCHED A
 W BENSON BOULEVARD TO MINNESOTA DRIVE
ALT 2 - ROADWAY PLAN & PROFILE
 (W 32ND AVE)
 STA 37+00 TO EOP

SCALE HOR. 1"=30'
 VER. 1"=3'

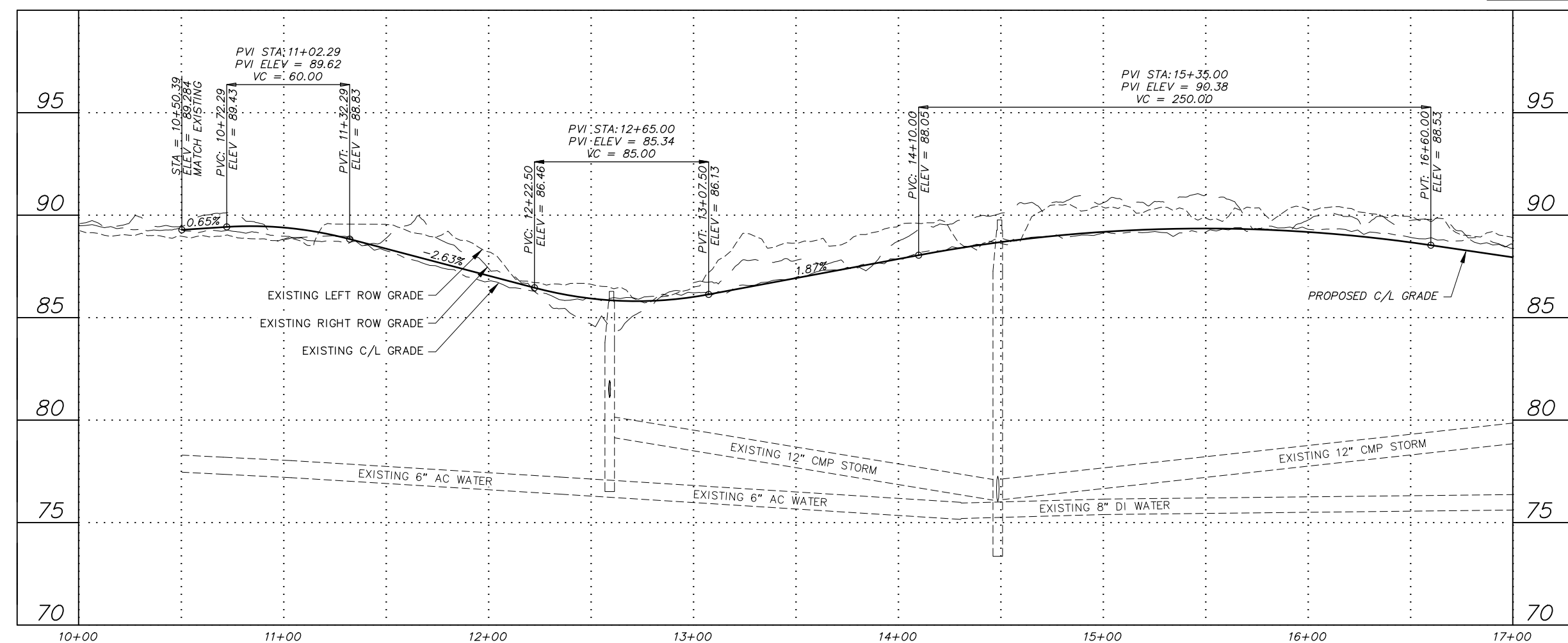
GRID SW628
 DATE SEP 2020 STATUS DSR

B2.4 of B2.4
 SHEET



- NOTES:**
- SEE ALTERNATIVE 2 PLAN AND PROFILE DRAWINGS FOR LOIS DRIVE PROPOSED STORM DRAIN FACILITIES.
 - ELECTRICAL IMPROVEMENTS NOT SHOWN.

**ROADWAY ALTERNATIVE #3
WITH INTERSECTION ALT #3**



File: I:\labdata\10145.00 Lois Drive And W 32nd Ave Pathway\00 CADD 2019\01 Working Set\01 Civil\10145.00 Roadway-Plan & Profile_Alt 3.dwg

RECORD DRAWING

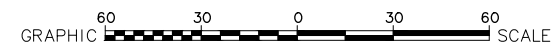
1. DATA PROVIDED BY: _____ TITLE: _____
 THIS WILL SERVE TO CERTIFY THAT THESE RECORD DRAWINGS ARE A TRUE AND ACCURATE REPRESENTATION OF THE PROJECT AS CONSTRUCTED.
 CONTRACTOR: _____ DATE: _____
 BY: _____

2. DATA TRANSFERRED BY: _____ TITLE: _____
 COMPANY: _____ DATE: _____

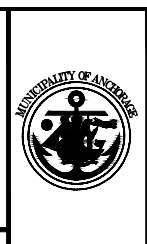
3. BASED ON PERIODIC FIELD OBSERVATIONS BY THE ENGINEER (OR AN INDIVIDUAL UNDER HIS/HER DIRECT SUPERVISION), THE CONTRACTOR-PROVIDED DATA APPEARS TO REPRESENT THE PROJECT AS CONSTRUCTED.
 DATA TRANSFER CHECKED BY: _____ TITLE: _____
 COMPANY: _____ DATE: _____
 BY: _____

DATA	DRAWN BY	CHECKED BY	FIELD BOOKS	BM NO.	LOCATION	ELEV.	REV	DATE	DESCRIPTION	BY
BASE										
TOPOGRAPHY										
PROFILE										
STORM SEWER			DESIGN MOA BOOK No. xxxx, xxxx,	GAAB xx	See MOA Benchmark Book, Page x-x	xxx.xx				
WATER/SANITARY SEWER			xxxx, xxxx, xxxx & xxxx	GAAB xx	See MOA Benchmark Book, Page x-x	xxx.xx				
GAS			STAKING							
TELEPHONE										
ELECTRIC										
DESIGN			ASBUILT							
QUANTITIES			CONTRACTOR							
PRELIMINARY/FINAL			INSPECTOR							
MUNICIPAL/STATE										

PLAN CHECK _____ CONSTRUCTION RECORD _____ VERTICAL DATUM _____ REVISIONS _____ CONSULTANT _____ SEAL _____



CRW ENGINEERING GROUP, LLC
 3940 ARCTIC BLVD. SUITE 300
 ANCHORAGE, ALASKA 99503
 PHONE: (907) 562-3252
 #AEC1882-AK

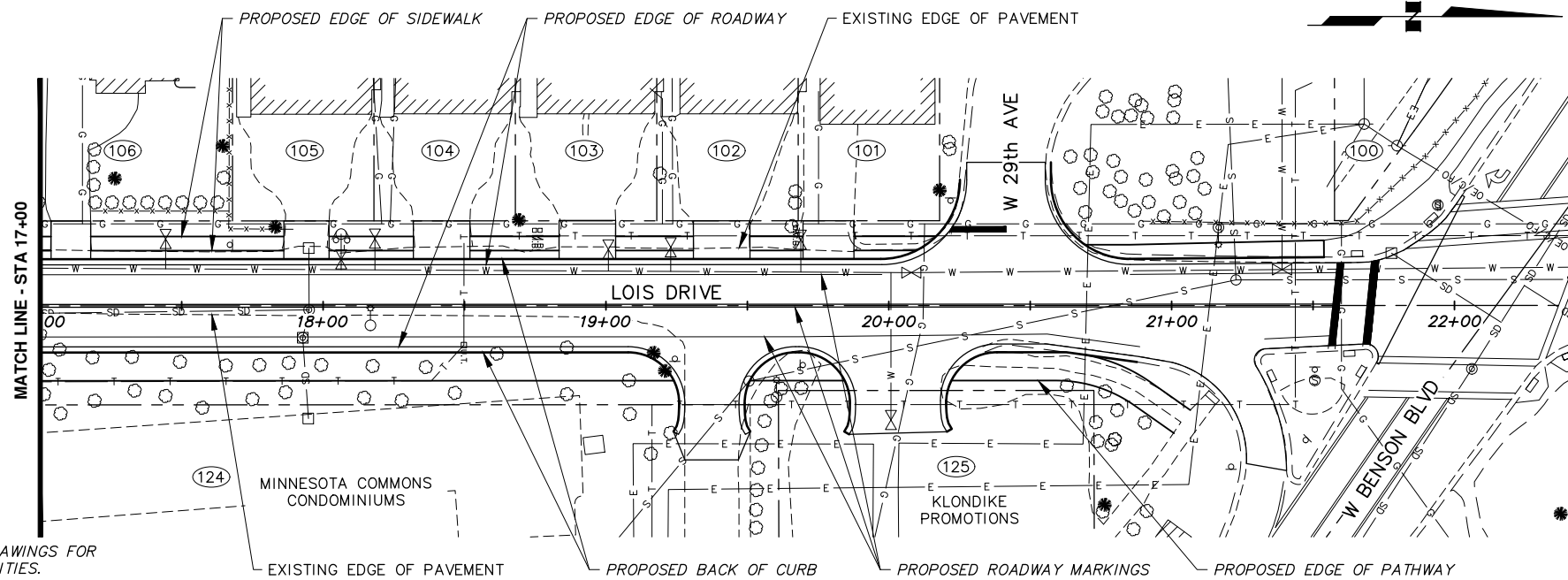


PROJECT MANAGEMENT AND ENGINEERING DEPARTMENT

19-08 LOIS DRIVE AND W 32ND AVE PATHWAY SCHED A
 W BENSON BOULEVARD TO MINNESOTA DRIVE
ALT 3 - ROADWAY PLAN & PROFILE (LOIS DRIVE)
 BOP TO STA 17+00

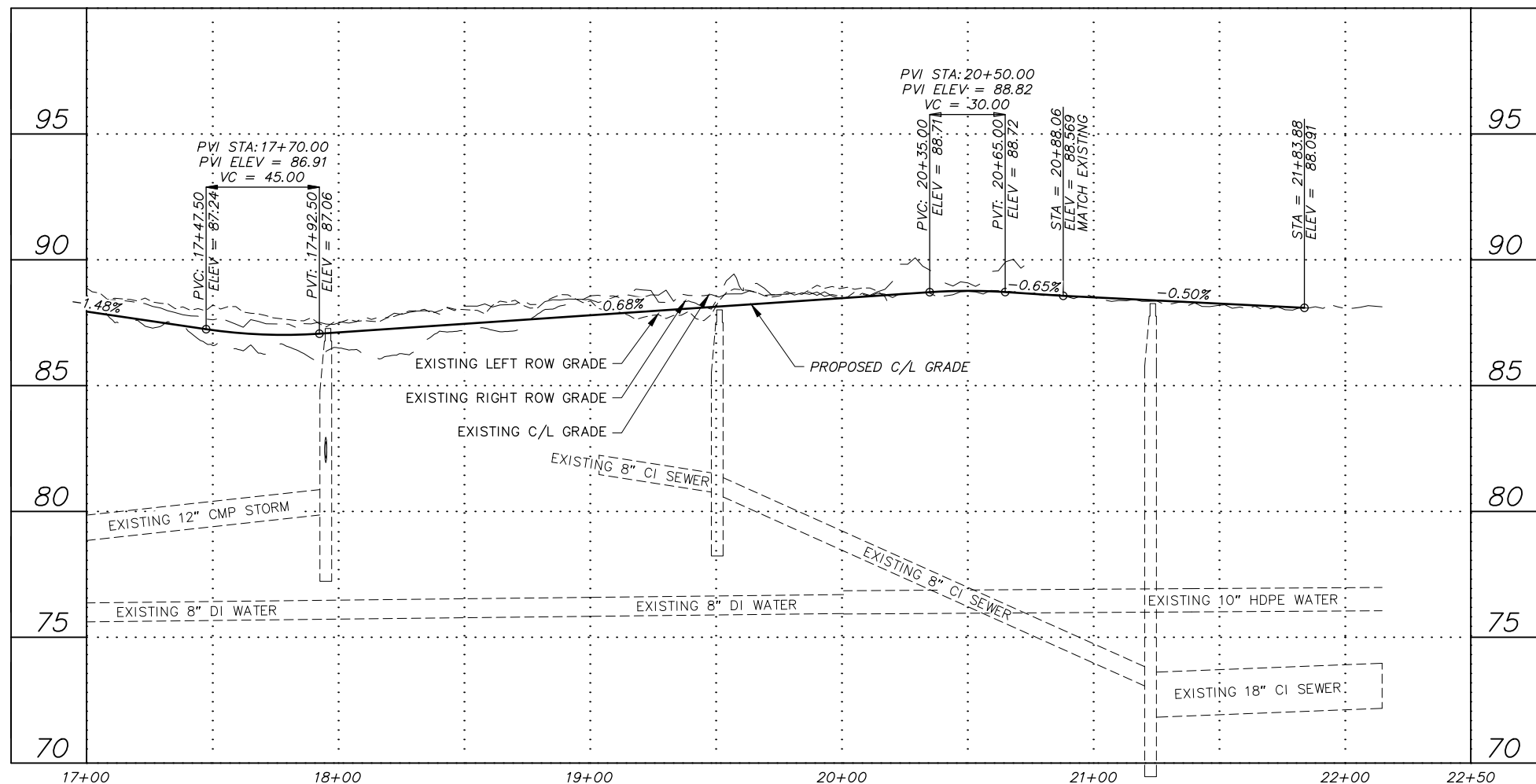
SCALE HOR. 1"=30'
 VER. 1"=3'

GRID SW628
 DATE SEP 2020 STATUS DSR SHEET B3.1 of B3.4



- NOTES:**
- SEE ALTERNATIVE 2 PLAN AND PROFILE DRAWINGS FOR LOIS DRIVE PROPOSED STORM DRAIN FACILITIES.
 - ELECTRICAL IMPROVEMENTS NOT SHOWN.

ROADWAY ALTERNATIVE #3
WITH INTERSECTION ALT #3



File: I:\labdata\10145.00 Lois Drive And W 32nd Ave Pathway\00 CADD 2019\01 Working Set\01 Civil\10145.00 Roadway-Plan & Profile_Alt 3.dwg

RECORD DRAWING

1. DATA PROVIDED BY: _____ TITLE: _____
 THIS WILL SERVE TO CERTIFY THAT THESE RECORD DRAWINGS ARE A TRUE AND ACCURATE REPRESENTATION OF THE PROJECT AS CONSTRUCTED.
 CONTRACTOR: _____ DATE: _____
 BY: _____

2. DATA TRANSFERRED BY: _____ TITLE: _____
 COMPANY: _____ DATE: _____

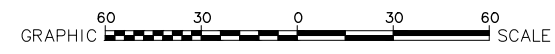
3. BASED ON PERIODIC FIELD OBSERVATIONS BY THE ENGINEER (OR AN INDIVIDUAL UNDER HIS/HER DIRECT SUPERVISION), THE CONTRACTOR-PROVIDED DATA APPEARS TO REPRESENT THE PROJECT AS CONSTRUCTED.
 DATA TRANSFER CHECKED BY: _____ TITLE: _____
 COMPANY: _____ DATE: _____
 BY: _____

DATA	DRAWN BY	CHECKED BY
BASE		
TOPOGRAPHY		
PROFILE		
STORM SEWER		
WATER/SANITARY SEWER		
GAS		
TELEPHONE		
ELECTRIC		
DESIGN		
QUANTITIES		
PRELIMINARY/FINAL		
MUNICIPAL/STATE		

FIELD BOOKS	BM NO.	LOCATION	ELEV.	REV	DATE	DESCRIPTION	BY
DESIGN MOA BOOK No. xxxx, xxxx,	GAAB xx	See MOA Benchmark Book, Page x-x	xxx.xx				
xxxx, xxxx, xxxx & xxxx	GAAB xx	See MOA Benchmark Book, Page x-x	xxx.xx				
STAKING							

ASBUILT _____
 CONTRACTOR _____
 INSPECTOR _____

PLAN CHECK _____ CONSTRUCTION RECORD _____ VERTICAL DATUM _____ REVISIONS _____ CONSULTANT _____ SEAL _____

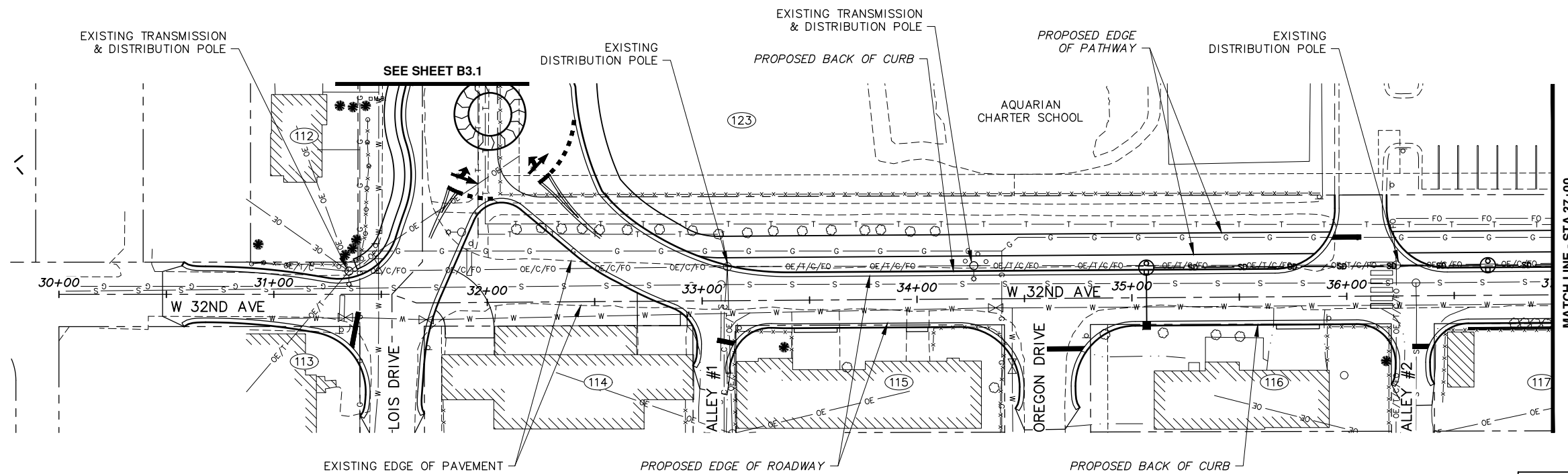



PROJECT MANAGEMENT AND ENGINEERING DEPARTMENT

19-08 LOIS DRIVE AND W 32ND AVE PATHWAY SCHED A
 W BENSON BOULEVARD TO MINNESOTA DRIVE

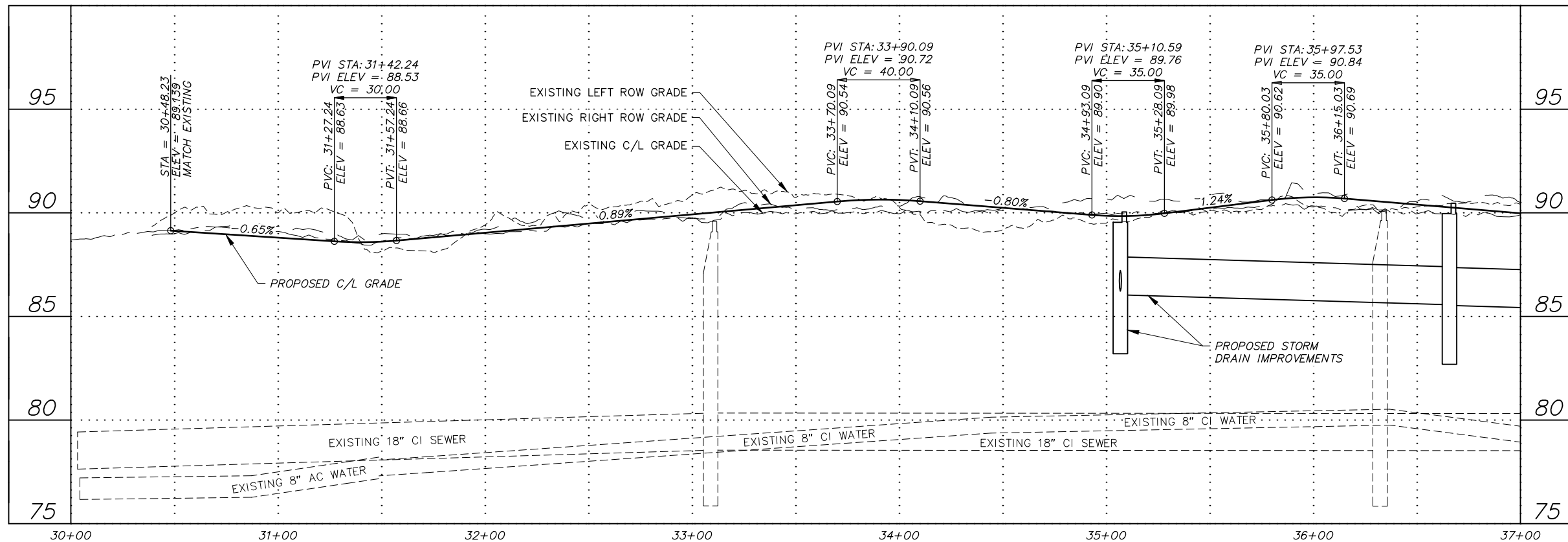
ALT 3 - ROADWAY PLAN & PROFILE (LOIS DRIVE)
 STA 17+00 TO EOP

SCALE HOR. 1"=30' VER. 1"=3'
 GRID SW628 DATE SEP 2020 STATUS DSR SHEET B3.2 of B3.4



ROADWAY ALTERNATIVE #3
WITH INTERSECTION ALT #3

NOTES:
1. ELECTRICAL IMPROVEMENTS NOT SHOWN.



File: I:\labdata\10145.00 Lois Drive And W 32nd Ave Pathway\00 CADD 2019\01 Working Set\01 Civil\10145.00 Roadway-Plan & Profile_Alt 3.dwg

RECORD DRAWING
 1. DATA PROVIDED BY: _____ TITLE: _____
 THIS WILL SERVE TO CERTIFY THAT THESE RECORD DRAWINGS ARE A TRUE AND ACCURATE REPRESENTATION OF THE PROJECT AS CONSTRUCTED.
 CONTRACTOR: _____ TITLE: _____ DATE: _____
 BY: _____
 2. DATA TRANSFERRED BY: _____ TITLE: _____
 COMPANY: _____ DATE: _____
 3. BASED ON PERIODIC FIELD OBSERVATIONS BY THE ENGINEER (OR AN INDIVIDUAL UNDER HIS/HER DIRECT SUPERVISION), THE CONTRACTOR-PROVIDED DATA APPEARS TO REPRESENT THE PROJECT AS CONSTRUCTED.
 DATA TRANSFER CHECKED BY: _____ TITLE: _____
 COMPANY: _____ DATE: _____
 BY: _____

DATA	DRAWN BY	CHECKED BY
BASE		
TOPOGRAPHY		
PROFILE		
STORM SEWER		
WATER/SANITARY SEWER		
GAS		
TELEPHONE		
ELECTRIC		
DESIGN		
QUANTITIES		
PRELIMINARY/FINAL		
MUNICIPAL/STATE		

FIELD BOOKS	BM NO.	LOCATION	ELEV.	REV	DATE	DESCRIPTION	BY
DESIGN MOA BOOK No. xxxx, xxxx,	GAAB xx	See MOA Benchmark Book, Page x-x	xxx.xx				
xxxx, xxxx, xxxx & xxxx	GAAB xx	See MOA Benchmark Book, Page x-x	xxx.xx				
STAKING							

PLAN CHECK	CONSTRUCTION RECORD	VERTICAL DATUM	REVISIONS	CONSULTANT	SEAL

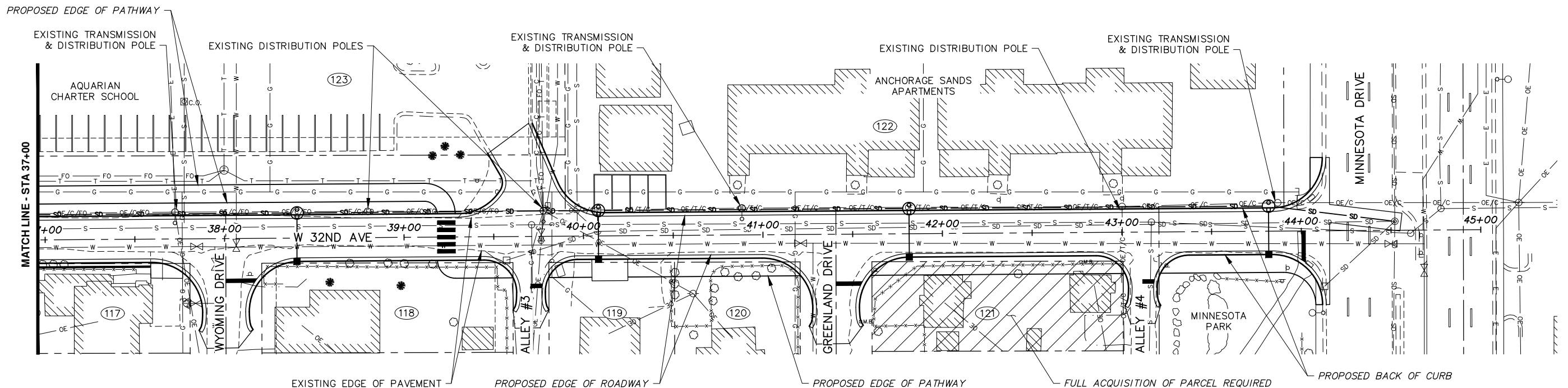
CRW ENGINEERING GROUP, LLC
 3940 ARCTIC BLVD, SUITE 300
 ANCHORAGE, ALASKA 99503
 PHONE: (907) 562-3252
 #AEC1882-AK



PROJECT MANAGEMENT AND ENGINEERING DEPARTMENT
 19-08 LOIS DRIVE AND W 32ND AVE PATHWAY SCHED A
 W BENSON BOULEVARD TO MINNESOTA DRIVE
ALT 3 - ROADWAY PLAN & PROFILE
 (W 32ND AVE)
 BOP TO STA 37+00

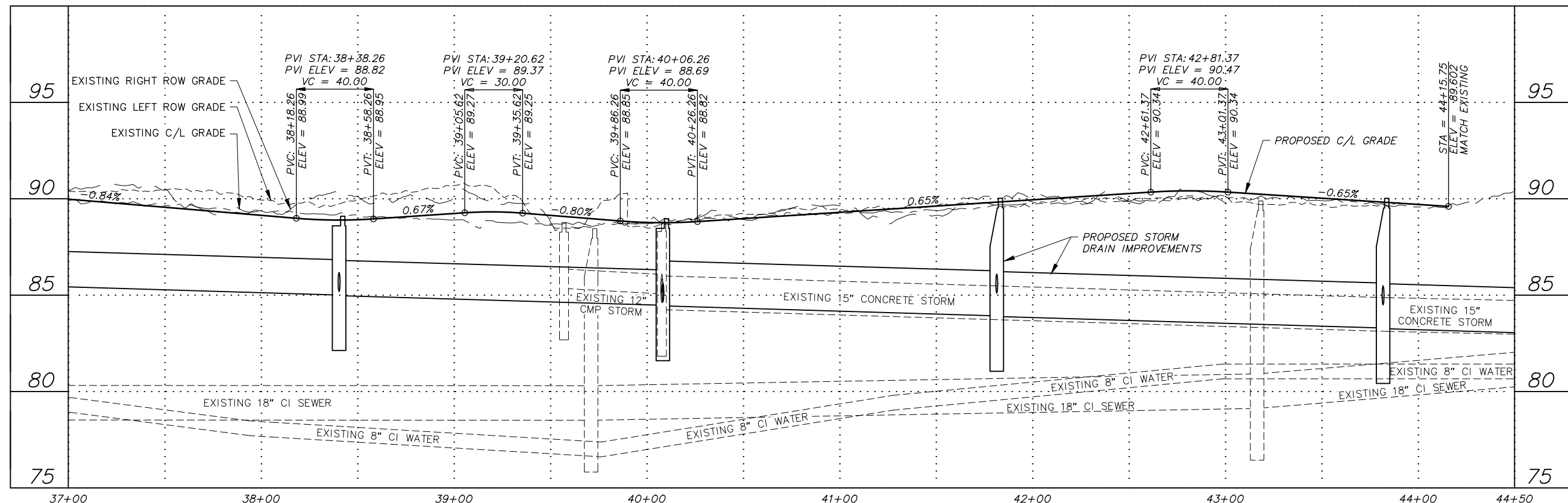
SCALE HOR. 1"=30'
VER. 1"=3'

GRID SW628
DATE SEP 2020 STATUS DSR SHEET B3.3 of B3.4



NOTES:
 1. ELECTRICAL IMPROVEMENTS NOT SHOWN.

**ROADWAY ALTERNATIVE #3
 WITH INTERSECTION ALT #3**

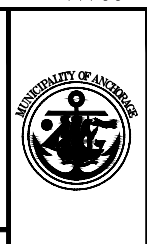


File: I:\labdata\10145.00 Lab Drive And W 32nd Ave Pathway\00 CADD 2019\01 Working Set\01 Civil\10145.00 Roadway-Plan & Profile_Alt 3.dwg

RECORD DRAWING
 1. DATA PROVIDED BY: _____ TITLE: _____
 THIS WILL SERVE TO CERTIFY THAT THESE RECORD DRAWINGS ARE A TRUE AND ACCURATE REPRESENTATION OF THE PROJECT AS CONSTRUCTED.
 CONTRACTOR: _____ DATE: _____
 BY: _____
 2. DATA TRANSFERRED BY: _____ TITLE: _____
 COMPANY: _____ DATE: _____
 3. BASED ON PERIODIC FIELD OBSERVATIONS BY THE ENGINEER (OR AN INDIVIDUAL UNDER HIS/HER DIRECT SUPERVISION), THE CONTRACTOR-PROVIDED DATA APPEARS TO REPRESENT THE PROJECT AS CONSTRUCTED.
 DATA TRANSFER CHECKED BY: _____ TITLE: _____
 COMPANY: _____ DATE: _____
 BY: _____

DATA	DRAWN BY	CHECKED BY	60	30	0	30	60
BASE			GRAPHIC SCALE				
TOPOGRAPHY							
PROFILE			FIELD BOOKS				
STORM SEWER							
DESIGN MOA BOOK No. xxxxx, xxxxx	GAAB xx	See MOA Benchmark Book, Page x-x	ELEV.	REV	DATE	DESCRIPTION	BY
WATER/SANITARY SEWER			xxxx, xxxxx, xxxxx & xxxxx				
GAS			GAAB xx	See MOA Benchmark Book, Page x-x	xxxx,xxx		
TELEPHONE							
ELECTRIC							
DESIGN							
QUANTITIES							
PRELIMINARY/FINAL							
MUNICIPAL/STATE							
PLAN CHECK							
CONSTRUCTION RECORD							
VERTICAL DATUM							
REVISIONS							

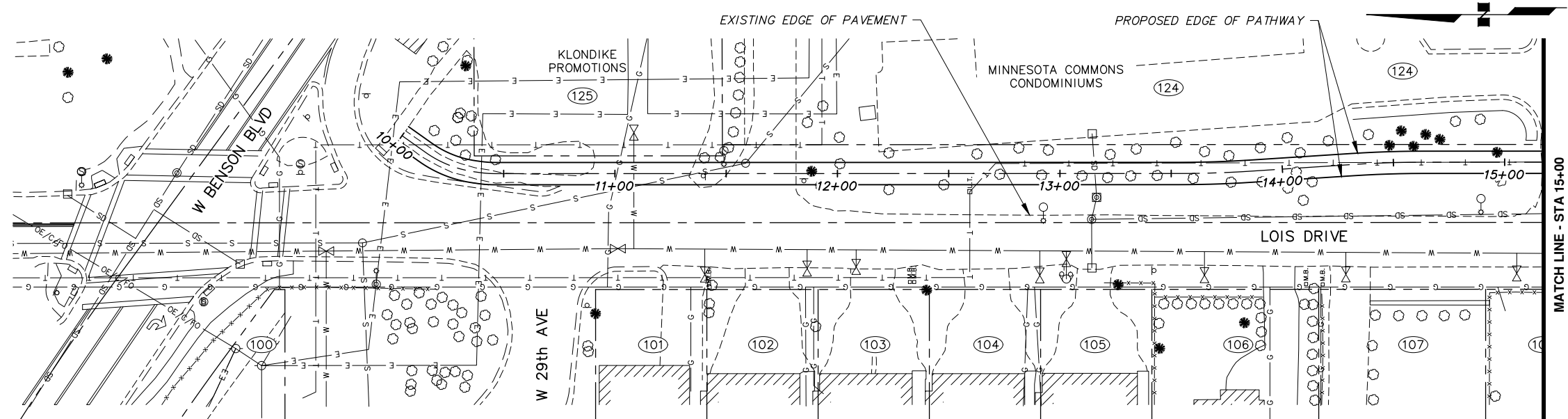
CRW ENGINEERING GROUP, LLC
 3940 ARCTIC BLVD, SUITE 300
 ANCHORAGE, ALASKA 99503
 PHONE: (907) 562-3252
 #AECLE882-AK



PROJECT MANAGEMENT AND ENGINEERING DEPARTMENT
 19-08 LOIS DRIVE AND W 32ND AVE PATHWAY SCHED A
 W BENSON BOULEVARD TO MINNESOTA DRIVE
ALT 3 - ROADWAY PLAN & PROFILE
 (W 32ND AVE)
 STA 37+00 TO EOP

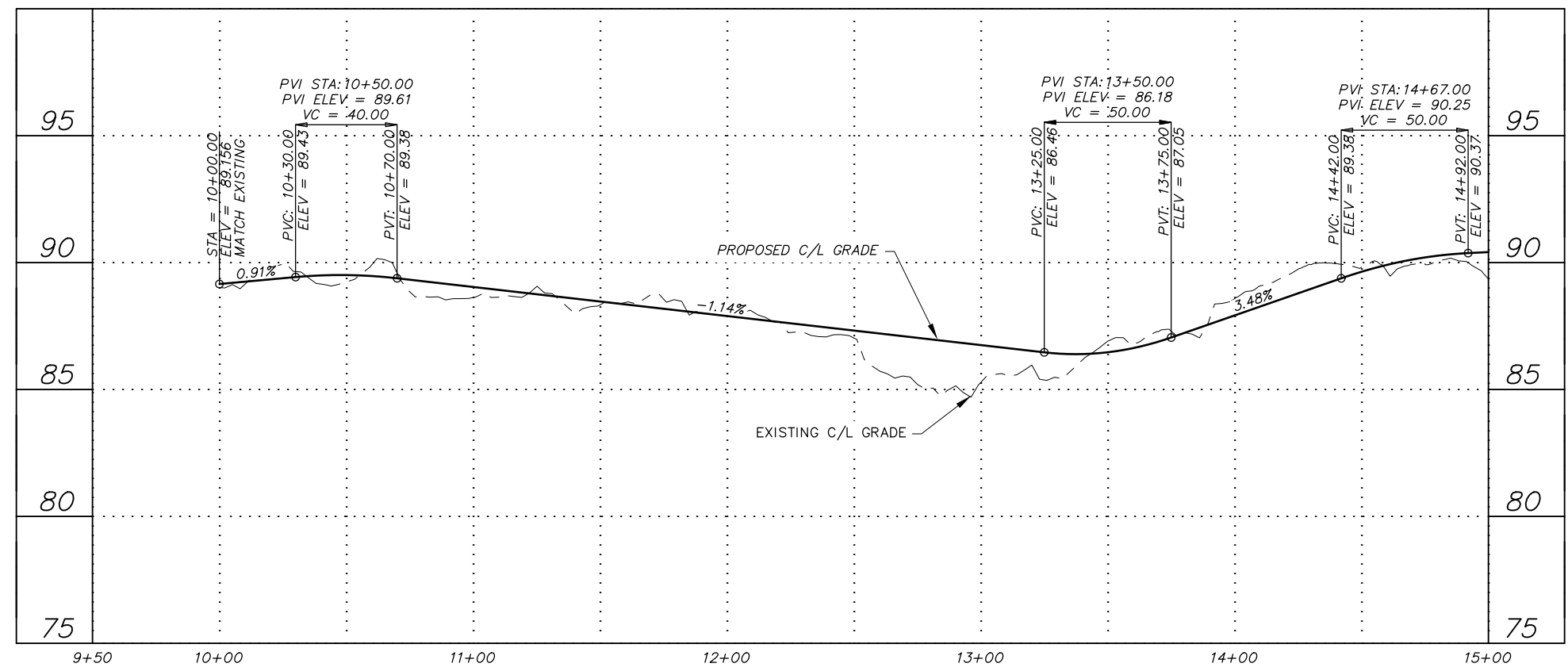
SCALE HOR. 1"=30'
 VER. 1"=3'

GRID SW628
 DATE SEP 2020 STATUS DSR SHEET B3.4 of B3.4



NOTES:
 1. ELECTRICAL IMPROVEMENTS NOT SHOWN.

PATHWAY ONLY
 ALTERNATIVE #4



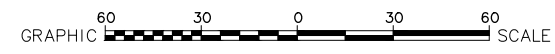
File: s:\labdata\10145.00 Lois Drive And W 32nd Ave Pathway\00 CADD 2019\01 Working Set\01 Civil\10145.00 Roadway-Plan & Profile_Alt 4.dwg

RECORD DRAWING
 1. DATA PROVIDED BY: _____ TITLE: _____
 THIS WILL SERVE TO CERTIFY THAT THESE RECORD DRAWINGS ARE A TRUE AND ACCURATE REPRESENTATION OF THE PROJECT AS CONSTRUCTED.
 CONTRACTOR: _____ DATE: _____
 BY: _____ TITLE: _____
 2. DATA TRANSFERRED BY: _____ TITLE: _____
 COMPANY: _____ DATE: _____
 3. BASED ON PERIODIC FIELD OBSERVATIONS BY THE ENGINEER (OR AN INDIVIDUAL UNDER HIS/HER DIRECT SUPERVISION), THE CONTRACTOR-PROVIDED DATA APPEARS TO REPRESENT THE PROJECT AS CONSTRUCTED.
 DATA TRANSFER CHECKED BY: _____ TITLE: _____
 COMPANY: _____ DATE: _____
 BY: _____

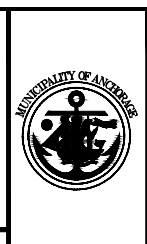
DATA	DRAWN BY	CHECKED BY
BASE		
TOPOGRAPHY		
PROFILE		
STORM SEWER		
WATER/SANITARY SEWER		
GAS		
TELEPHONE		
ELECTRIC		
DESIGN		
QUANTITIES		
PRELIMINARY/FINAL		
MUNICIPAL/STATE		

FIELD BOOKS	BM NO.	LOCATION	ELEV.	REV	DATE	DESCRIPTION	BY
DESIGN MOA BOOK No. xxxx, xxxx, xxxx, xxxx	GAAB xx	See MOA Benchmark Book, Page x-x	xxx.xx				
xxxx, xxxx, xxxx & xxxx	GAAB xx	See MOA Benchmark Book, Page x-x	xxx.xx				
STAKING							
ASBUILT							
CONTRACTOR							
INSPECTOR							

BASIS OF THIS DATUM GAAB 1972 ADJUST

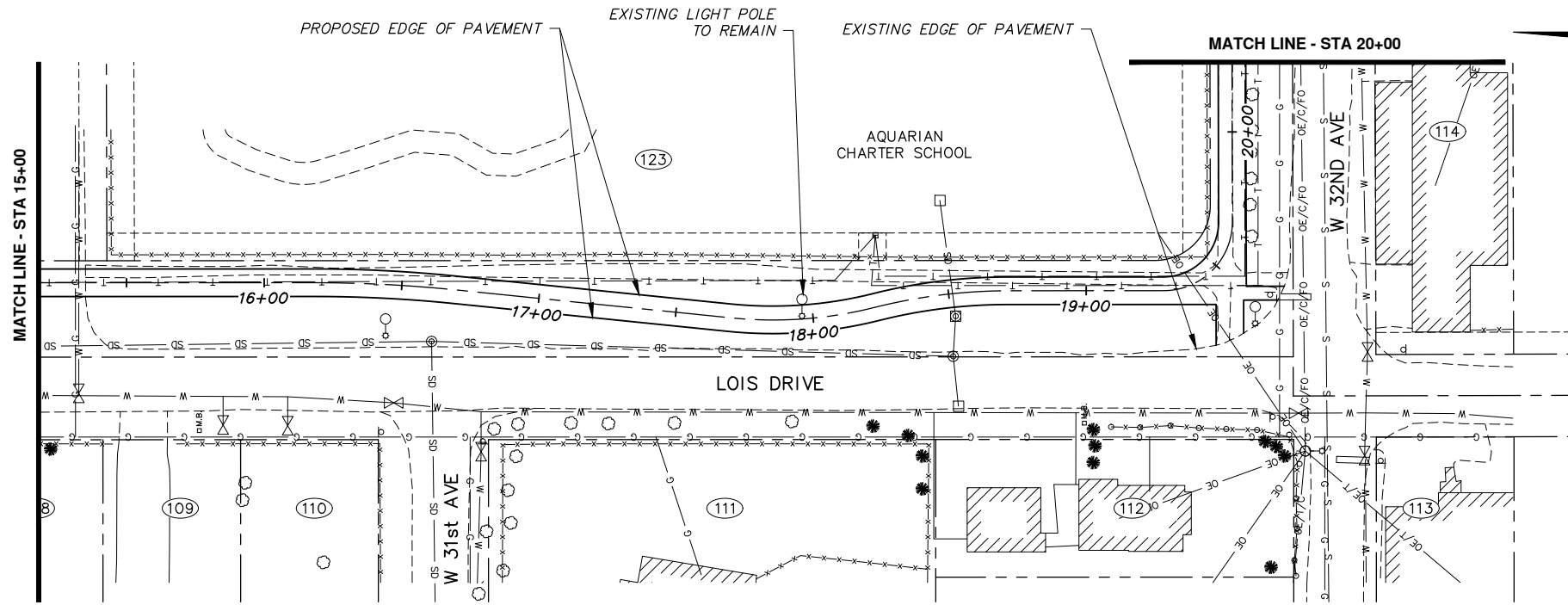


CRW ENGINEERING GROUP, LLC
 3940 ARCTIC BLVD, SUITE 300
 ANCHORAGE, ALASKA 99503
 PHONE: (907) 562-3252
 #AECLE882-AK



PROJECT MANAGEMENT AND ENGINEERING DEPARTMENT
 19-08 LOIS DRIVE AND W 32ND AVE PATHWAY W BENSON BOULEVARD TO MINNESOTA DRIVE SCHED A
ALT 4 - PATHWAY PLAN & PROFILE (LOIS DRIVE)
 BOP TO STA 15+00

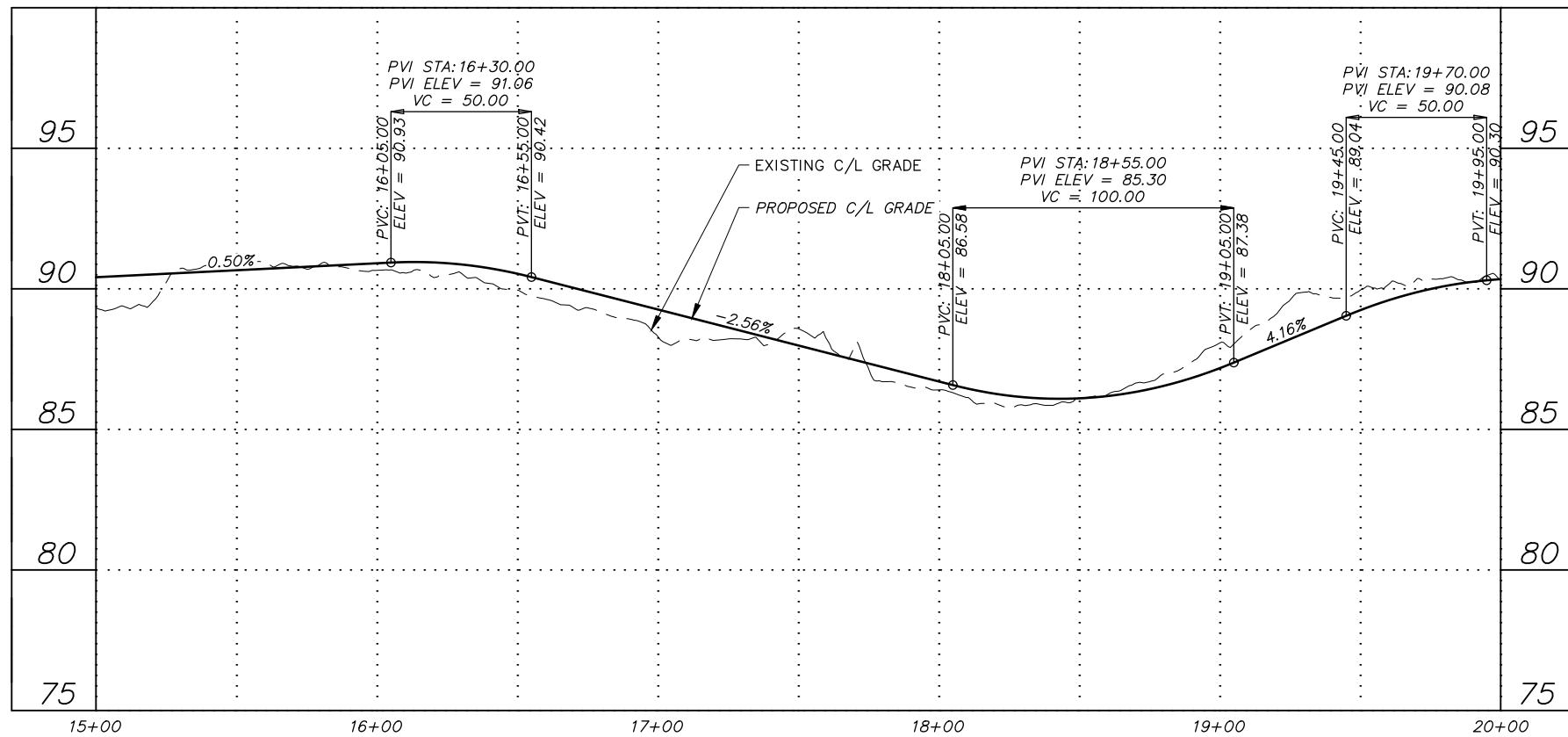
SCALE HOR. 1"=30' VER. 1"=3'
 GRID SW628 DATE SEP 2020 STATUS DSR SHEET B4.1 of B4.4



NOTES:

- ELECTRICAL IMPROVEMENTS NOT SHOWN.

PATHWAY ONLY
ALTERNATIVE #4



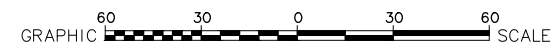
File: I:\labdata\10145.00 Lois Drive And W 32nd Ave Pathway\00 CADD 2019\01 Working Set\01 Civil\10145.00 Roadway-Plan & Profile_Alt 4.dwg

RECORD DRAWING
 1. DATA PROVIDED BY: _____ TITLE: _____
 THIS WILL SERVE TO CERTIFY THAT THESE RECORD DRAWINGS ARE A TRUE AND ACCURATE REPRESENTATION OF THE PROJECT AS CONSTRUCTED.
 CONTRACTOR: _____ DATE: _____
 BY: _____ TITLE: _____
 2. DATA TRANSFERRED BY: _____ TITLE: _____
 COMPANY: _____ DATE: _____
 3. BASED ON PERIODIC FIELD OBSERVATIONS BY THE ENGINEER (OR AN INDIVIDUAL UNDER HIS/HER DIRECT SUPERVISION), THE CONTRACTOR-PROVIDED DATA APPEARS TO REPRESENT THE PROJECT AS CONSTRUCTED.
 DATA TRANSFER CHECKED BY: _____ TITLE: _____
 COMPANY: _____ DATE: _____
 BY: _____

DATA	DRAWN BY	CHECKED BY
BASE		
TOPOGRAPHY		
PROFILE		
STORM SEWER		
WATER/SANITARY SEWER		
GAS		
TELEPHONE		
ELECTRIC		
DESIGN		
QUANTITIES		
PRELIMINARY/FINAL		
MUNICIPAL/STATE		

FIELD BOOKS	BM NO.	LOCATION	ELEV.	REV	DATE	DESCRIPTION	BY
DESIGN MOA BOOK No. xxxx, xxxx,	GAAB xx	See MOA Benchmark Book, Page x-x	xxx.xx				
xxxx, xxxx, xxxx & xxxx	GAAB xx	See MOA Benchmark Book, Page x-x	xxx.xx				
STAKING							

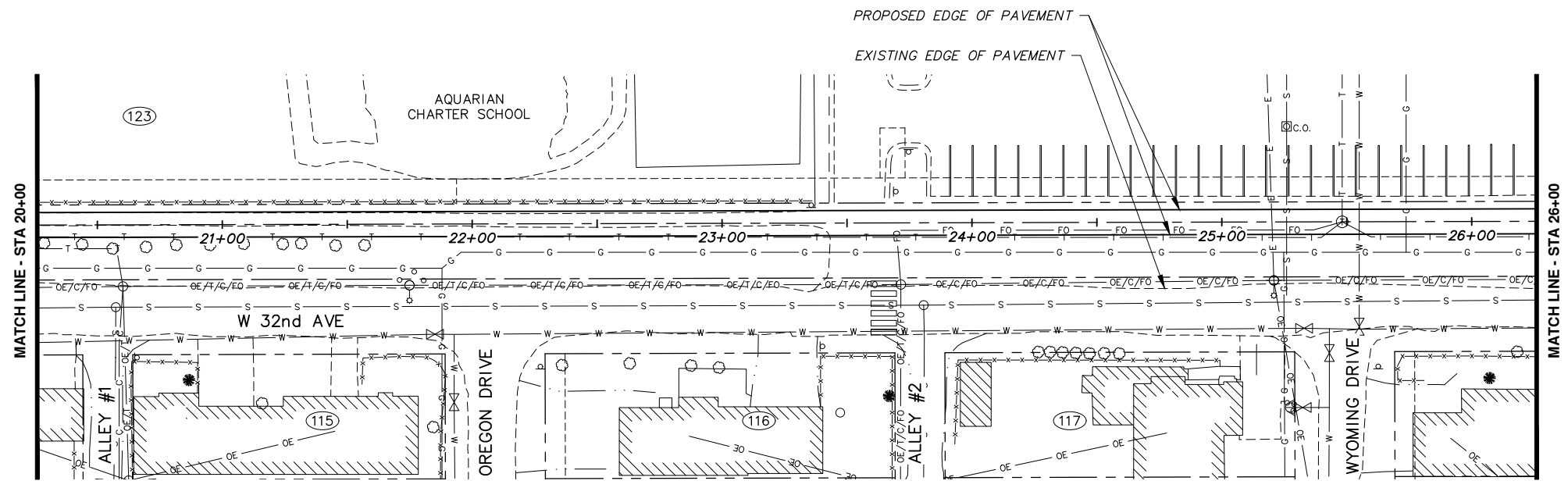
PLAN CHECK	CONSTRUCTION RECORD	VERTICAL DATUM	REVISIONS	CONSULTANT	SEAL



CRW ENGINEERING GROUP, LLC
 3940 ARCTIC BLVD, SUITE 300
 ANCHORAGE, ALASKA 99503
 PHONE: (907) 562-3252
 #AECLE882-AK

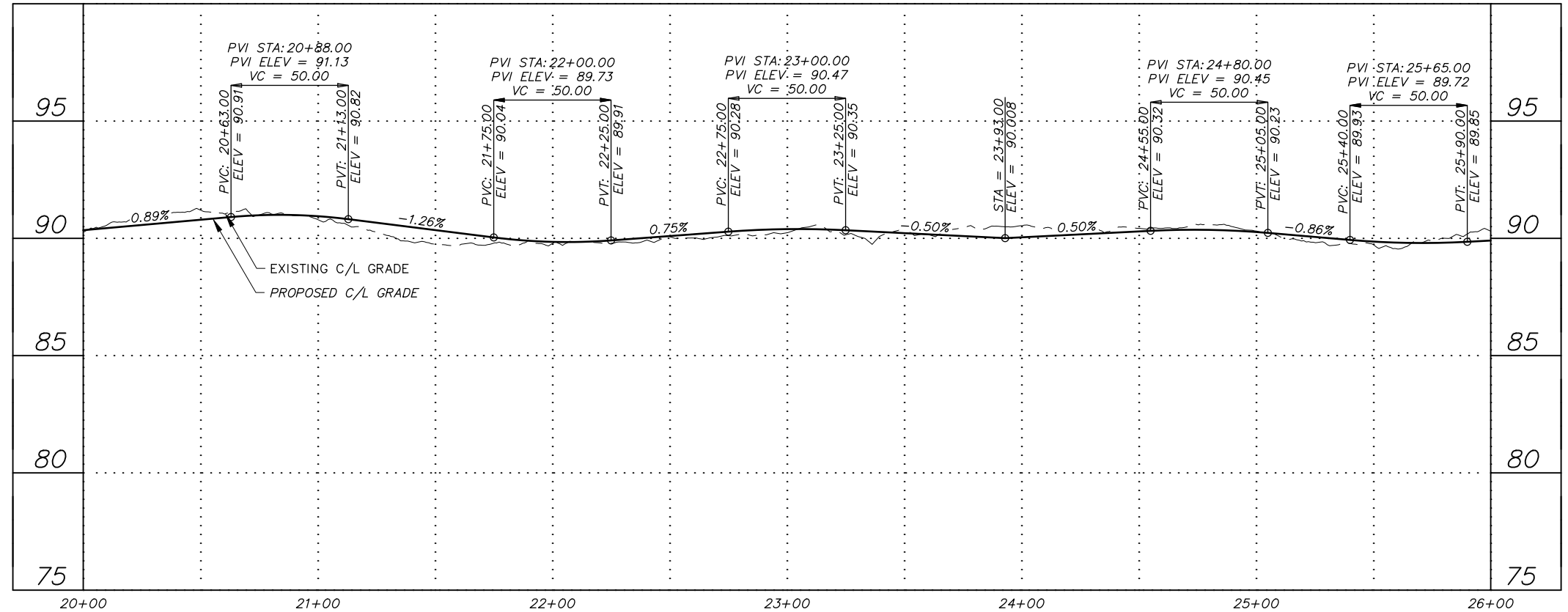


PROJECT MANAGEMENT AND ENGINEERING DEPARTMENT
 19-08 LOIS DRIVE AND W 32ND AVE PATHWAY SCHED A
 W BENSON BOULEVARD TO MINNESOTA DRIVE
ALT 4 - PATHWAY PLAN & PROFILE (LOIS DRIVE)
 STA 15+00 TO STA 20+00
 SCALE HOR. 1"=30' VER. 1"=3'
 GRID SW628
 DATE SEP 2020 STATUS DSR SHEET B4.2 of B4.4



PATHWAY ONLY
ALTERNATIVE #4

NOTES:
1. ELECTRICAL IMPROVEMENTS NOT SHOWN.



File: I:\labdata\10145.00 Lois Drive And W 32nd Ave Pathway\00 CADD 2019\01 Working Set\01 Civil\10145.00 Roadway-Plan & Profile_Alt 4.dwg

RECORD DRAWING
1. DATA PROVIDED BY: _____ TITLE: _____
THIS WILL SERVE TO CERTIFY THAT THESE RECORD DRAWINGS ARE A TRUE AND ACCURATE REPRESENTATION OF THE PROJECT AS CONSTRUCTED.
CONTRACTOR: _____ TITLE: _____ DATE: _____
BY: _____

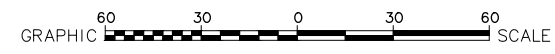
2. DATA TRANSFERRED BY: _____ TITLE: _____
COMPANY: _____ DATE: _____

3. BASED ON PERIODIC FIELD OBSERVATIONS BY THE ENGINEER (OR AN INDIVIDUAL UNDER HIS/HER DIRECT SUPERVISION), THE CONTRACTOR-PROVIDED DATA APPEARS TO REPRESENT THE PROJECT AS CONSTRUCTED.
DATA TRANSFER CHECKED BY: _____ TITLE: _____
COMPANY: _____ DATE: _____
BY: _____

DATA	DRAWN BY	CHECKED BY
BASE		
TOPOGRAPHY		
PROFILE		
STORM SEWER		
WATER/SANITARY SEWER		
GAS		
TELEPHONE		
ELECTRIC		
DESIGN		
QUANTITIES		
PRELIMINARY/FINAL		
MUNICIPAL/STATE		

FIELD BOOKS	BM NO.	LOCATION	ELEV.	REV	DATE	DESCRIPTION	BY
DESIGN MOA BOOK No. xxxx, xxxx,	GAAB xx	See MOA Benchmark Book, Page x-x	xxx.xx				
xxxx, xxxx, xxxx & xxxx	GAAB xx	See MOA Benchmark Book, Page x-x	xxx.xx				
STAKING							

PLAN CHECK	CONSTRUCTION RECORD	VERTICAL DATUM	REVISIONS	CONSULTANT	SEAL



CRW ENGINEERING GROUP, LLC
3940 ARCTIC BLVD, SUITE 300
ANCHORAGE, ALASKA 99503
PHONE: (907) 562-3252
#AEC1882-AK



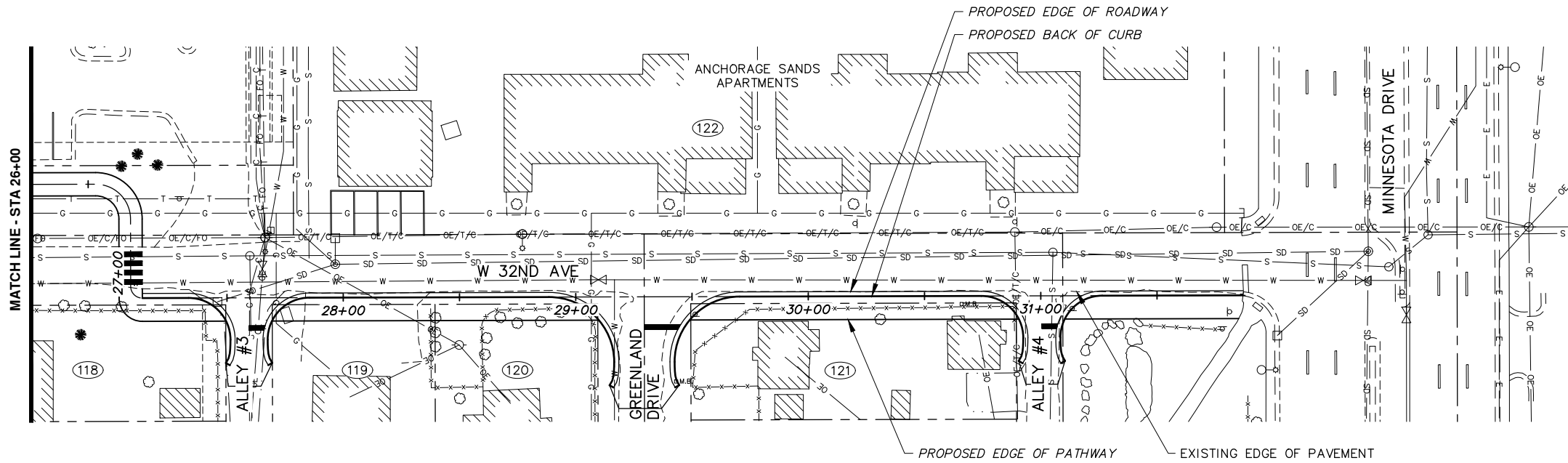
PROJECT MANAGEMENT AND ENGINEERING DEPARTMENT

19-08 LOIS DRIVE AND W 32ND AVE PATHWAY SCHED A
W BENSON BOULEVARD TO MINNESOTA DRIVE

ALT 4 - PATHWAY PLAN & PROFILE (W 32ND AVE)

STA 20+00 TO STA 26+00

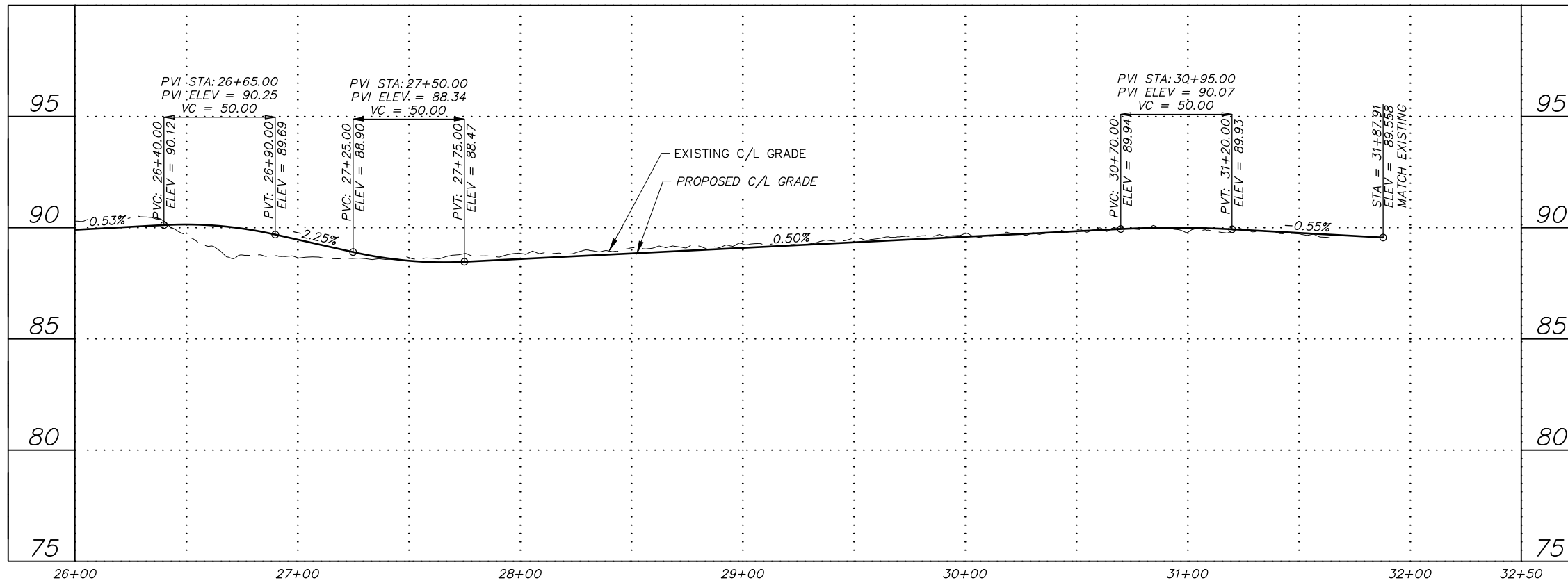
SCALE HOR. 1"=30' VER. 1"=3'
DATE SEP 2020 STATUS DSR SHEET **B4.3** of **B4.4**



PATHWAY ONLY
ALTERNATIVE #4

NOTES:

- ELECTRICAL IMPROVEMENTS NOT SHOWN.



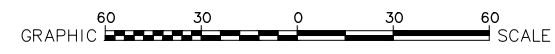
File: I:\labdata\10145.00 Lois Drive And W 32nd Ave Pathway\00 CADD 2019\01 Working Set\01 Civil\10145.00 Roadway-Plan & Profile_Alt 4.dwg

RECORD DRAWING
 1. DATA PROVIDED BY: _____ TITLE: _____
 THIS WILL SERVE TO CERTIFY THAT THESE RECORD DRAWINGS ARE A TRUE AND ACCURATE REPRESENTATION OF THE PROJECT AS CONSTRUCTED.
 CONTRACTOR: _____ DATE: _____
 BY: _____ TITLE: _____
 2. DATA TRANSFERRED BY: _____ TITLE: _____
 COMPANY: _____ DATE: _____
 3. BASED ON PERIODIC FIELD OBSERVATIONS BY THE ENGINEER (OR AN INDIVIDUAL UNDER HIS/HER DIRECT SUPERVISION), THE CONTRACTOR-PROVIDED DATA APPEARS TO REPRESENT THE PROJECT AS CONSTRUCTED.
 DATA TRANSFER CHECKED BY: _____ TITLE: _____
 COMPANY: _____ DATE: _____
 BY: _____

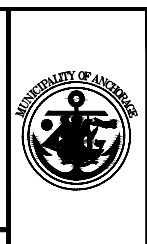
DATA	DRAWN BY	CHECKED BY
BASE		
TOPOGRAPHY		
PROFILE		
STORM SEWER		
WATER/SANITARY SEWER		
GAS		
TELEPHONE		
ELECTRIC		
DESIGN		
QUANTITIES		
PRELIMINARY/FINAL		
MUNICIPAL/STATE		

FIELD BOOKS	BM NO.	LOCATION	ELEV.	REV	DATE	DESCRIPTION	BY
DESIGN MOA BOOK No. xxxxx, xxxxx	GAAB xx	See MOA Benchmark Book, Page x-x	xxx.xx				
xxxx, xxxxx, xxxxx & xxxxx	GAAB xx	See MOA Benchmark Book, Page x-x	xxx.xx				
STAKING							
ASBUILT							
CONTRACTOR							
INSPECTOR							

BASIS OF THIS DATUM GAAB 1972 ADJUST



CRW ENGINEERING GROUP, LLC
 3940 ARCTIC BLVD. SUITE 300
 ANCHORAGE, ALASKA 99503
 PHONE: (907) 562-3252
 #AECLE882-AK



PROJECT MANAGEMENT AND ENGINEERING DEPARTMENT
 19-08 LOIS DRIVE AND W 32ND AVE PATHWAY SCHED A
 W BENSON BOULEVARD TO MINNESOTA DRIVE
ALT 4 - PATHWAY PLAN & PROFILE
 (W 32ND AVE)
 STA 26+00 TO EOP

SCALE HOR. 1"=30' VER. 1"=3'
 GRID SW628
 DATE SEP 2020 STATUS DSR SHEET B4.4 of B4.4